

**HA001**  
**REF : HA001**



**Description:**

Full body harness with back attachment, made of 45 mm wide red polyester straps and two corrosion-resistant parachute buckles at the thigh level, to open and easily adjust the harness.

**Materials:**

Straps : red polyester.

**CE** EN 361

**HAR12**  
**REF : HAR12**



**Description:**

2 fall arrester anchorage point harness (back - front). 2 adjustment loops.

**Materials:**

Straps : polyester.

**Weight** : 0,7 kg.

**Sizes:** S/M/L, XL/XXL

**Colours:** Orange

**CE** EN 361

**HAR14**  
**REF : HAR14**



**Description:**

2 fall arrester anchorage point harness (back - front). 2 adjustment loops. 2 adjustable lateral plates. Positioning belt with broad thermoformed back. Sponge lining. 2 anchorage points for work positioning.

**Materials:**

Straps : polyester.

Belt : Sponge lining.

**Weight** : 1,1 kg.

**Sizes:** S/M/L, XL/XXL

**Colours:** Orange

**CE** EN361 EN358

**HAR24**  
**REF : HAR24**



**Description:**

Harness with extensible "Riplight System II®" patented waves with positioning belt. 2 fall arrester anchorage points (back - front). 4 adjustable buckles. Positioning belt with thermoformed back closed with wide Velcro. 120° rotation. Large thermoformed back with sponge lining. 2 lateral anchorage points for work positioning.

**Materials:**

Straps : polyester.  
Belt : Sponge lining.  
**Weight** : 1,8 kg.

**Sizes:** S/M/L

**Colours:** Black / Orange-coloured



**HA054**  
**REF : HA054**



**Description:**

Full body harness with back and chest attachments, made of 45-mm wide red polyester straps, and two corrosion-resistant parachute buckles at the thigh level for opening and easy adjustment of the harness.

**Materials:**

Straps: polyester.

**Sizes:** M, L, XL

**Colours:** Red



**HA060**  
**RE : HA060**



**Description:**

Expert range fall arrest harness made of 45-mm straps and consists of:

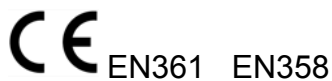
- 2 attachments points (rear - chest).
- 1 work positioning belt with 2 lateral attachment and 1 textile thermo-formed back support.
- 1 semi-rigid saddle in textile.
- elastic straps.
- quick buckles at thigh level and continuous adjustment buckles at shoulder's level.

**Materials:**

Straps: polyester.

**Sizes:** Adjustable

**Colours:** Navy Blue / Black



**HA098**  
**REF : HA098**



**Description:**

This full body harness light and easy to put on and to adjust, is intended for incorporation in a fall arrest system. It is made of 45-mm straps, it consists of dorsal and front attachments, and quick buckles at thigh level.

**Materials:**

Straps: polyester.

**Sizes:** Adjustable

**Colours:** Red / Grey

**CE** EN361

**HAR35 EOLIEN**  
**REF : HAR35**



**Description:**

Two colour harness with positioning belt. 3 fall arrester attachment points (back- front right side - front left side). 4 adjustable buckles in light alloy. 2 automatic buckles. Positioning belt with thermoformed back closed with wide Velcro for more comfort. 120° rotation. 2 lateral anchorage points. 1 adjustment loop. Sponge back lining.

**Materials:**

Straps : polyester.

Belt : Sponge lining.

**Weight :** 2 kg.

**Sizes:** S/M/L, XL/XXL

**Colours:** Orange

**CE** EN358 EN361

**HA644**  
**REF : HA644**



**Description:**

Full body harness with 2 attachments points HA644, indissociable, including a full body harness HA044 and a vest.

\* Full body harness with bicoloured polyester straps (45 mm): front and back attachment, ventral belt, karabiner, quick buckles at thigh level.

\* One size polyester vest closed by zip including 2 low pockets closed by zip. Fabric parts made of Cordura® or of knitted fabric 3D. Spine protection. Waist level adjustments on each side by elastic waistband with stoppers. Net fabric lining.

**Materials:**

Straps : polyester

Vest : polyester

**Sizes:** L, XL

**Colours:** Black / Orange-coloured

**CE** EN361

**EX021**  
**REF : EX21**

**Description:**

Adjustable work positioning lanyard via reducer. Adjustable length: 1.10 to 2 m. Stranded rope Ø 12 mm. Protective sheath on the splices.

**Materials:**

Polyamide.

**Weight:** 0,3 kg.

**Colours:** White / Grey

CE EN358

**LV201**

**REF : LV201**

**Description:**

Temporary horizontal lifeline with certified strap for 2 people. Adjustment of the length and the tension with a ratchet tensioner. Equipped with 2 carabiners AM002. Bag for storage and transport.

**Materials:**

Buckles: Leather.

Strap: Polyester.

AM002: Galvanized steel.

**Weight:** 3,3 kg.

**Colours:** Yellow

CE EN355

**AN209CC**

**REF : AN209CC**

**Description:**

Fall arrester with energy absorber in lanyard webbing. Thimble loops. Length: 2 m. 2 Screw lock carabiners in galvanized steel, opening 17 mm (AM002).

**Materials:**

Lanyard: Polyester.

Carabiner: galvanized steel.

**Weight:** 0,7 kg

CE EN355

**AN219CDD**  
**REF : AN219CDD**



**Description:**

Fall arrester with energy absorber in double lanyard webbing (Y). Thimble loops. Length: 2 m. 3 Screw lock carabiners in galvanized steel, opening 17 mm (AM002).

**Materials:**

Lanyard: Polyester.  
Carabiner: galvanized steel.  
**Weight:** 1,3 kg



**AN208RCD**  
**REF : AN208RCD**



**Description:**

Fall arrester with energy absorber in braided rope Ø 12 mm, simple and adjustable by means of a gear ring on the rope. Length: 1.50 to 2 m. 1 Screw lock carabiner in galvanized steel, opening 17 mm (AM002). 1 Automatic hook lock in galvanized steel, large opening 55 mm (AM022).

**Materials:**

Rope: Polyamide.  
Absorber: Polyester.  
Carabiner and hook: galvanized steel.  
**Weight :** 1,3 kg



**AN213CDD**  
**REF : AN213CDD**



**Description:**

Fall arrester with energy absorber in double lanyard strap (Y). Thimble loops. Length: 2 m. 1 Screw lock carabiner in galvanized steel, opening 17 mm (AM002). 2 Automatic hooks lock in galvanized steel, large opening 55 mm (AM022).

**Materials:**

Lanyard: Polyester.  
Carabiner and hook: galvanized steel.  
**Weight:** 1,8 kg

**Colours:** Orange



**AN230CD**  
**REF : AN230CD**



**Description:**

Fall arrester with energy absorber in woven webbing with integrated crumple on the lanyard. Retracted length: 1.40 m. Stretched length: 2 m. 1 Screw lock carabiner in galvanized steel, opening 17 mm (AM002). 1 Automatic hook lock in galvanized steel, large opening 55 mm (AM022).

**Materials:**

Polyester.

Carabiner and hook: galvanized steel.

**Weight:** 1 kg

**Colours:** Black



**SLIDING FALL ARRESTER ON Ø 12 MM ROPE ANCHORAGE LINE - 10 M**  
**REF: AN063**



**Description :**

Sliding non opening fall arrester set with fall indicator on stranded rope anchorage line Ø 12 mm. Wear indicator. 1 loop spliced on high end. Length: 10 m.

**Materials:**

Fall arrester: Stainless steel.

Rope: Polyamide.

Carabiner : Zinc-coated steel.

**Weight :** 1,3 kg.



**SCREW SAFETY KARABINER**  
**REF:AM002**



**Description:**

Screw safety karabiner provided with a double locking mechanism. 17-mm opening. Screw manual locking type. Anticorrosion coating and antilocking of the locking ring.

**Materials:**

Zinc-coated steel.

**Weight:** 0,17 kg

**Colours:** Steel



**AUTOMATIC LOCK HOOK, 55 MM OPENING - PACK OF 2**  
**REF: AM022**



**Description :**

Automatic lock hook in zinc-coated steel. Large opening 55 mm. Eye hook. R> 20 kN.

**Materials:**

Zinc-coated steel.

**Weight :** 0,50 kg.

**Colours:** Steel

**CE** EN 362

**STRAP SELF-RETRACTABLE FALL ARRESTER + 1 AM002 - 2.5 M**  
**REF: AN102**



**Description :**

Self retractable fall arrester with 46 mm strap with energy dissipater. Protection case. 1 carabiner AM002.

**Materials:**

Strap : polyester.

Casing: plastic.

Carabiner : steel.

**Weight:** 1,1 kg.

**CE** EN 360

**PROTECTOR ELEVATOR 20 M**  
**REF:TR007**



**Description :**

Self retractable fall arrester in steel cable with removable rescue winch. Steel case. Inertia locking system. Energy absorber. Length: 20 m. 1 connector AM020.

**Materials:**

Cable: steel.

Casing: steel.

Winch: steel.

Connector: light alloy.

**Weight:** 14,9 kg.

**CE** EN 360 EN 1496 CLASS B

## TELESCOPIC TRIPOD WITH ANCHORAGE RING + 2 PLATES - 1,45 TO 2,15 M REF: TR022



### Description :

Telescopic tripod in galvanized steel. Adjustable height from 1.45 m to 2.15 m. Maximum wheelbase of 1.50 m on the ground. 1 central anchorage ring for a fall arrest. Equipped with two adjustable plates for a self retractable fall arrester.

### Materials:

Galvanized steel.

**Weight :** 26 kg.

**Colours:** Steel

**CE** EN 795 CLASS B

## ALUMINIUM VENTRAL BLOCKER REF: TC001



### Description :

Ventral opening blocker type in aluminium alloy. Works on braided rope Ø 8 to 13 mm.

### Materials:

Aluminium alloy.

**Weight:** 0,16 kg.

**Sizes:** Single

**Colours:** Red

**CE** EN 567

## ALUMINIUM ASCENSION HANDLE - RIGHT HAND REF: TC002



### Description :

Right hand ascension handle in aluminium alloy. Works on braided rope Ø 8 to 13 mm.

### Materials:

Aluminium alloy.

**Weight:** 0,24 kg.

**Colours:** Blue

**CE** EN 567



**FIGURE OF EIGHT IN ALUMINIUM**  
**REF:TC004**



**Description:**

Figure of eight in aluminium alloy. Works on braided rope  $\varnothing$  9 to 12 mm.

**Materials:**

Aluminium alloy.

**Weight:** 0,13 kg.

CE EN 12278

**DOUBLE PULLEY WITH OSCILLATING FLANGES IN ALUMINIUM**  
**REF:TC015**



**Description:**

Double pulley with oscillating flanges in aluminium alloy for braided rope less than  $\varnothing$  16 mm.

**Materials:**

Aluminium alloy

**Weight:** 0,43 kg.

CE EN 12278