



**ACE  
INTERNATIONAL**

**PERSONAL PROTECTIVE EQUIPMENT  
2019 - 2020**

**ACE INTERNATIONAL** is your privileged partner to provide you the equipment adapted to your needs taking into account your site conditions and environment. We intervene in **Oil & Gas sector**, and **Industrial sectors** including **manufacturing, construction**, etc.. Our mission is to listen to your needs in order to answer as fast as possible and satisfy your requirements in quality and service. **ACE INTERNATIONAL** is a family business based in China (Suzhou & Shanghai) and in Australia (Sydney).

We started the company in 2007; Our mission was to source the **best quality products in Asia for our international clients**. After few years of success, we decided to specialise in PPE and safety equipment. We are official distributor of **top brands** and producer of safety products. Our main markets are Asia, Europe and Africa. After many years aware of the needs of our clients, we launched our brand **ACE® Clothing, ACE® Gloves** and **ACE® Glasses**.

Our aim is to add more products that can bring update always safety solutions for our clients. Our products follow **international standards** and **certified** to assure the best quality. On the website, you will find our wide range of Personal Protective Equipment and other safety equipment as Collective Protective Equipment including safety signs, First aid Kit, anti-Slip solutions, Cleaning face and others useful equipment to protect you in your site environment.



**N° 1** in Safety Equipment distribution  
**N° 1** dans la distribution d'équipement de sécurité  
**N° 1** in der verteilung der sicherheitseinrichtungen  
**N° 1** em distribuição do equipamentos de segurança  
**N° 1** в снабжённые оборудований безопасности  
**N° 1** en la distribución de equipamiento de seguridad  
**N° 1** nella fornitura d'equipaggiamento di sicurezza  
安全防护设备**行业领先**单位

**1** Quality Certified



**2** R&D Design and Product Dev.



**3** Production OEM



**4** Warehousing Logistics



**5** Showroom and Office



**6** Customer Services



# INDEX

HEAD PROTECTION 4 - 5

FACE PROTECTION 6 - 8

EYE PROTECTION 9 - 13

EAR PROTECTION 14 - 17

RESPIRATORY PROTECTION 18 - 25

HAND PROTECTION 26 - 34

SAFETY SHOES 35 - 39

FALL PROTECTION 40 - 48

BODY PROTECTION 49 - 67

BAGS 68 - 69

CLEANING ACCESSORIES 70 - 71

LIFE JACKET 72 - 74

**QUARTZ III**  
**REF : QUARTZ3**



**Description:**

UV-resistant high density polypropylene safety helmet. Polyamide lining : 3 textile bands with 8 fixing points. Sweat band. Ratchet adjustment : head measurement 53 to 63 cm. 2 possible positions of the head measurement (top/low) for a better comfort. This helmet may receive the following accessories: JUGALPHA, or DYNAMIC JUGALPHA MENTALPHA

**Materials:**

Polypropylene (PP)  
Weight: 351 g

**Sizes:** Adjustable

**Colours:** Blue, Green, Orange, Red, White, Yellow

**CE** EN397 EN50365

**QUARTZ IV**  
**REF : QUARTZ4**



**Description:**

Ventilated UV-resistant high density polypropylene (PP) safety helmet. Polyamide harness: 3 textile bands with 8 fixing points. Foam sweat band. Ratchet adjustment : head sizes 53/63 cm. 2 possible positions of the headband (top/low) for a better comfort. This helmet may receive the following accessories: JUGALPHA, or DYNAMIC JUGALPHA MENTALPHA.

**Materials:**

Polypropylene (PP)  
Weight: 360 g

**Sizes:** Adjustable

**Colours:** Blue, Green, Orange, Red, White, Yellow

**CE** EN397

**DIAMOND V BASEBALL STYLE**  
**REF : DIAMONDV**



**Description:**

ABS safety helmet. Innovative "baseball cap" shape to improve the vertical vision. Also tested for front back wearing, to reduce encumbrance. Textile harness: 3 textile straps with 8 fixing points. Foam sweat band. Innovative button adjustment "color to color" for head sizes 53/63 cm. 2 possible positions of the headband (top/low) for a better comfort. Electrical insulation. Fluo colors and retroreflective bands for high visibility day and night. This helmet is validated with the following accessories: JUGALPHA, DYNAMIC JUGALPHA or MENTALPHA.

**Materials:**

ABS  
Weight : 368 g

**Sizes:** Adjustable

**Colours:** Black, Blue, Green, Orange, Red, White, Yellow

**CE** EN397 EN 50365



**QUARTZ III**  
**REF : QUARTZ3**



**Description:**

UV-resistant high density polypropylene safety helmet. Polyamide lining : 3 textile bands with 8 fixing points. Sweat band. Ratchet adjustment : head measurement 53 to 63 cm. 2 possible positions of the head measurement (top/low) for a better comfort. This helmet may receive the following accessories: JUGALPHA, or DYNAMIC JUGALPHA MENTALPHA

**Materials:**

Polypropylene (PP)  
Weight: 351 g

**Sizes:** Adjustable

**Colours:** Blue, Green, Orange, Red, White, Yellow

**CE** EN397 EN50365

**QUARTZ IV**  
**REF : QUARTZ4**



**Description:**

Ventilated UV-resistant high density polypropylene (PP) safety helmet. Polyamide harness: 3 textile bands with 8 fixing points. Foam sweat band. Ratchet adjustment : head sizes 53/63 cm. 2 possible positions of the headband (top/low) for a better comfort. This helmet may receive the following accessories: JUGALPHA, or DYNAMIC JUGALPHA MENTALPHA.

**Materials:**

Polypropylene (PP)  
Weight: 360 g

**Sizes:** Adjustable

**Colours:** Blue, Green, Orange, Red, White, Yellow

**CE** EN397

**DIAMOND V BASEBALL STYLE**  
**REF : DIAMONDV**



**Description:**

ABS safety helmet. Innovative "baseball cap" shape to improve the vertical vision. Also tested for front back wearing, to reduce encumbrance. Textile harness: 3 textile straps with 8 fixing points. Foam sweat band. Innovative button adjustment "color to color" for head sizes 53/63 cm. 2 possible positions of the headband (top/low) for a better comfort. Electrical insulation. Fluo colors and retroreflective bands for high visibility day and night. This helmet is validated with the following accessories: JUGALPHA, DYNAMIC JUGALPHA or MENTALPHA.

**Materials:**

ABS  
Weight : 368 g

**Sizes:** Adjustable

**Colours:** Black, Blue, Green, Orange, Red, White, Yellow

**CE** EN397 EN 50365



**GRANITE WIND**  
**REF : GRANITEWING**



**Description:**

Ventilated ABS safety helmet. Mountain helmet style : without visor for the best vertical vision. Less encumbrance. Light. Innovative textile harness for extra comfort. Thermoformed sweat band. Innovative adjustable ROTOR® system (patented) : head sizes 53 to 63 cm. Sold with 3 fixing points chin strap.

**Materials:**

ABS

**Weight :** 355 g

**Sizes:** Adjustable

**Colours:** Black, Blue, Orange, Red, White, Yellow



**WINTER CAP**  
**REF : WINTERCAP**



**Description:**

Lining placed inside the helmet. Accessory for extreme cold protection, easy to remove. User instructions included. Suitable for our range of helmets.

**Materials:**

Outside: artificial leather.

Inside: artificial plush (100%polyester.)

**Sizes:** Adjustable

**Colours:** Black



**VISOR HOLD-MINI**  
**REF : VISORHOLDMINI**



**Description:**

Faceshield holder suitable for GRANITE WIND safety helmets. To combine with VISORPCMINI and VISORGMINI.

**Materials:**

ABS  
Weight: 160 g

**CE** EN166

**SUPERVIZOR**  
**REF : SUPERVIZOR**



**Description :**

Compatible with wide range of helmet designs (size, shape and geometry) • Visor fixing method is secure and allows easy visor replacement • Creased visor eliminates gaps and visor profile follows contours of the face for maximum protection, allowing full unrestricted head movement • Visor selection can be tailored to the specific hazard/application: mechanical, chemical, heat etc • A robust, heavy-duty, helmet mounted faceshield range with hearing protection compatibility

**CE** EN166

**VISORTORIC**  
**REF : VISORTORIC**



**Description:**

Clear polycarbonate injected visor. Thickness 1,9/2,0 mm. Electric Arc protection. Universal fixing. Suitable for faceshield holder VISOR HOLDER and VIROR H (BALB12 and PICO2 support). 39 x 20 cm.

**Materials:**

Polycarbonate  
162 g

**Sizes:** Single

**Colours:** Colourless

**CE** EN170 EN166

**BARRIER**  
**REF : BARRIER**



**Description:**

Helmet for electric arc welding, MIG, TIG that requires DIN9 to DIN13 protection. Polypropylene. Sweat band. Headband with easy ratchet adjustment. Vision shield : 100 x 60 mm. LCD filter included. Shades : Clear : DIN4 - Dark : DIN9 to DIN13. Sensitivity : 0,0003s. (Clear shade to dark shade). Powered by solar cells and 2 replaceable lithium batteries included.

**Materials:**

Polypropylene  
LCD lens

**Colours:** Blue

**CE** EN166 EN379 EN175

**BALBI2**  
**REF : BALBI2**



**Description:**

Faceshield with front protection + VISORPC visor : clear polycarbonate visor with plastic edge. 39 x 20 cm.

**Materials:**

Polycarbonate

**Sizes:** Single

**Colours:** Yellow

**CE** EN166

**MSA HELMET**  
**REF : MSA HELMET**



**Description:**

Classic original "v" shape, ensuring excellent resistance to impact and puncture resistance; Use high-quality raw materials, regardless of the PE or ABS materials all materials. Extended visor design, additional shading effect, reducing glare, dust-proof and dirt, chemicals and so on, enhanced eye protection and face;

**Material:** ABS

**Sizes:** Adjustable

**Colours:** orange, red, blue, yellow, white

**CE**



**HELMET LINER**  
**REF : HELMET LINER**



**Description:**

Applicable to industry of electric power, chemicals, mining, construction, geological and transportation machinery, and other industries. Hoods can be used with any helmets GB2811-2007 standards;

**Sizes:** Single

**Colours:** Black

EN166 EN 367

**NECK WARMER**  
**REF : NECK WARMER**



**Description:**

Windproof winter cycling outdoors in winter special days, face covered when it is cold; it can also be pulled down, pulled up to the Chin or nose, based on actual usage changes. Can also be used as a hat and a scarf. used to protect the face and neck, soft, comfortable. It can be used when you ride bicycles, skiing, mountain climbing and other outdoor sports.

**Sizes:** Single

**Colours:** height 25cm width 25cm



**BRAVA2**  
**REF : BRAVA 2**



**Description:**

Single lens polycarbonate glasses, soft flat spatula type arms, integrated polycarbonate nose piece. Easy to use with safety helmet and ear defender. Lateral protection. Scratch-resistant.

\* Available in:

- Clear flash lens version (UV400), reference : BRAVA2LM. Comply with EN170 (UV) standard.

- Colourless lens version (UV400), reference: BRAVA2IN. Comply with EN170 (UV) standards.

- Yellow version (UV400), reference : BRAVA2JA. Comply with EN170 (UV) standards.

- Smoke lens version (UV400), reference : BRAVA2FU. Comply with EN172 (solar protection) standards.

- Smoke flash lens version (UV400), reference : BRAVA2FF. Comply with EN172 (solar protection) standards.

**Materials :**

Frame and lens : polycarbonate

**Weight :** 25 g

**Sizes:** Single

**Colours:** Colourless, Flash, Honey, Smoked, Yellow

**CE** EN166 EN170 EN172 ANSI Z87+

**VULCANO2**  
**REF : VULCANO2**



**Description:**

Polycarbonate single lens glasses. Adjustable and tilting nylon arms. Spatula tips. Extra comfort integrated PVC nose piece. Side protection. UV400, scratch-resistant and anti-mist.

Available in :

Colourless lens version, Ref. : VULC2ORIN. Comply with EN170 (UV) standards.

Smoke lens version, Ref. : VULC2NOFU. Comply with EN172 (solar protection) standards.

**Materials:**

Arms: nylon

Lens : polycarbonate

**Weight:** 26 g

**Sizes:** Single

**Colours:** Black, Orange-coloured / Grey

**CE** EN166 EN170 EN172 ANSI Z87+

**MEGA CLEAR**  
**REF : MEGAIN**



**Description:**

Clear single lens polycarbonate deep cover goggles. Direct side ventilation. Lateral protections. Eyelet for cord. Scratch-resistant.

**Materials:**

Polycarbonate

**Weight :** 55 g

**Sizes:** Single

**Colours:** Colourless

**CE** EN166 EN170 ANSI Z87+

## PITON2 CLEAR FOR VISITORS REF : PITON2

**Description:**

Single lens polycarbonate glasses, direct side ventilation. Lateral protection. Eyelet for cord. Clear lens version, ref : LUCERNEIN

**Materials :**

Polycarbonate

**Weight :** 45 g

**Sizes:** Single

**Colours:** Colourless

**CE** EN166 EN170

## KILIMANDJARO REF : KILIMANDJARO

**Description:**

Single lens polycarbonate glasses. Adjustable temple. Adjustable inclination. Lateral protection.

Available in :

- Colourless lens version, scratch-resistant, UV400 : Ref. KILIMGRIN, comply with EN170 (UV) standards.

- Smoke lens version, scratch-resistant, UV400: Ref. KILIMNOFU100, comply with EN172 (solar protection) standards.

- Colourless lens version, anti-mist, scratch-resistant, UV400 : Ref. KILIMGRINAB, comply with EN170 (UV) .

**Materials:**

Polycarbonate

**Weight** 32 g

**Sizes:** Single

**Colours:** Colourless, Smoked

**CE** EN166 EN170 EN172 ANSI Z87+

## RUIZ2 REF : RUIZ2

**Description :**

Clear polycarbonate goggle. Flexible PVC frame. Indirect ventilation by 4 ventilators. Woven elastic strap.

**Materials :**

Frame: Flexible PVC.

Screen: polycarbonate.

**Weight :** 86 gr

**Sizes:** Adjustable

**Colours:** Colourless

**CE** EN166

## BLOW SMOKE GRADIENT REF : BLOW



### Description:

Ergonomical glasses. Polycarbonate screen. Twin-material arms. Elasticated tips. Anti-slip soft PVC nose piece. "soft confort" removable lens for dust protection. UV400, Scratch-resistant.

Available in :

Grey frame, smoke lenses anti-mist, ref. BLOWGRFU, comply with EN172 (solar protection)  
Incolor frame, gradient smoke lenses, ref. BLOWINFG, comply with EN172 (solar protection)

### Materials:

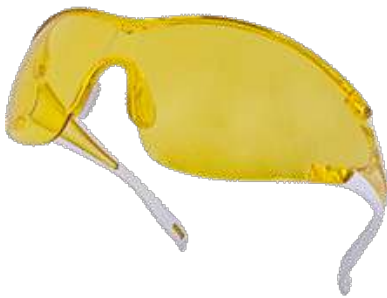
Polycarbonate  
Weight : 34 g

Sizes: Single

Colours: Flash, Smoked

CE EN166 EN172

## EGON REF : EGON



### Description:

Ergonomic glasses. Polycarbonate lens. Sports look. Twin material arms. Extra comfort soft PVC nose piece.

Available in:

- Clear flash lens version, reference : EGONROLM. Comply with EN170 (UV) standard.
- Clear lens version, reference: EGONGRIN. Comply with EN170 (UV) standard.
- Yellow lens version, reference : EGONBCJA. Comply with EN170 (UV) standard.
- Smoke lens version, reference : EGONGRFU. Comply with EN172 (solar protection) standard.

### Materials:

Frame and lens : polycarbonate.

Sizes: Single

Colours: Colourless, Flash, Smoked, Yellow

CE EN166 EN170 EN172

## LIPARI2 T5 REF : LIPARI2 T5



### Description :

Polycarbonate single lens glasses. Adjustable and tilting nylon arms. Spatula tips. Extra comfort integrated PVC nose piece. Side protection. UV400, scratch-resistant and anti-mist.

Available in :

Colourless lens version, ref. : LIPA2BLIN. Comply with EN170 (UV) standards.  
Welder lens version: ref. : LIPA2T5. Comply with EN169 (welder) standards.

Materials: Sides : nylon Lens: polycarbonate

Weight : 34 g

Sizes: Single

Colours: Colourless - Shade 5

CE EN66 EN169 EN170

**SALINA**  
**REF : SALINA**



**Description :**

Ultra light single lens polycarbonate glasses. Extra fine metal frame. Non-slip PVC tips. Adjustable PVC nose piece. Available in : Brown/grey frame, smoked brown screen, ref. SALIFU, comply with EN172 (solar protection) standards.

**Materials:** Polycarbonate

**Weight :** 26 g

**Sizes:** Single

**Colours:** Smoked

**CE** EN172 EN166

**KILAUEA MIRROR**  
**REF : KILAUEA MIRROR**



**Description :**

Polycarbonate glasses. Sport design. Nylon frame with matt finish for better comfort and durability

**Materials:** Polycarbonate and Nylon

**Weight :** 28 g

**Sizes:** Single

**Colours:** Mirror

**CE** EN172 EN166

**TACANASPORT**  
**REF : TACANASPORT**



**Description:**

Clear polycarbonate goggles. Indirect ventilation. Comfortable flexible frame. Panoramic screen. Adapted to the wearing of corrective glasses and disposable respiratory half-masks. Wide elastic strap.

**Materials:**

Frame : PVC

Screen : polycarbonate

**Sizes:** Adjustable

**Colours:** Transparent

**CE** EN166



**Description :**

Safety glasses composed by a single lens in Polycarbonate and adjustable temples in nylon. Soft nosepad integrated. Lateral protection. These spectacles are designed to be used only mounted on Deltaplus industrial safety helmets models: QUARTZ UP, ZIRCON, GRANITE and BASEBALL DIAMOND. Not to be used alone. AVAILABLE IN: Colourless lens version, reference: FUEGOARIN. Comply with EN166 & EN170 (UV) standards. Adjustable arms. UV400. Anti-mist. Anti-scratch.

**Materials:** Lens material : polycarbonate

**Frame material:**

nylon Nose pad: TPR

**Weight:** 35 gr

**Sizes:** Single

**Colours:** Aluminium-coloured

**CE** EN166 EN170

**SUZUKA2**  
**REF : SUZUKA2**



**Description:**

Ear defender for safety helmets. Adjustable in height. High flexibility ABS arm and cups. PVC cups padded with synthetic foam. To use alone or with VISOR HOLDER faceshield holder. Suitable for QUARTZ, ZIRCON, GRANITE PEAK and BASEBALL DIAMOND safety helmets. SNR = 27 dB.

**Materials:**

Cup & headband: ABS  
Cushion: Foam & PVC  
Weight : 257 g

**Sizes:** Adjustable, Single

**Colours:** Black, Fluorescent Yellow



**INTERLAGOS**  
**REF : INTERLAGOS**



**Description:**

Ear defender with ABS cups. Pads filled with synthetic foam. Double plastic headband (POM), adjustable in height, with soft and ventilated reinforcement for a better comfort. SNR : 33 dB.

**Materials:**

Cup: ABS / Pads: Foam / Headband: POM  
Weight : 278 g

**Sizes:** Adjustable

**Colours:** Fluorescent Yellow, Grey



**PITBOARD**  
**REF : PITBOARD**



**Description:**

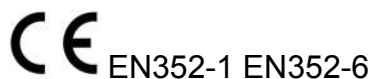
Electronic ear defender with ABS cups. Adjustable steel and sponge headband, ultra comfort. 1 button to adjust the volume on each cup for right/left use separately. Walkie-talkie system: allows to choose the communication channel (8 channels and 38 sub-channels available). Maximum reception distance: 3 km. Hunting system : amplification of voices and then warning signals, to avoid the risk of isolation in the workplace. System of amplification shuts off automatically and reverts to passive earmuff mode, in the case of impulsive noise which reaches 80/82 dB. Works with Lithium battery (3.7V/800mA) .

**Materials:**

Cup: ABS / Outside cushion: PVC / Inside cushion: PU + Sponge / Headband: Manganese Steel / Headband cushion : PU + PUC + Sponge  
Weight (batteries included): 500 g

**Sizes:** Adjustable

**Colours:** Black



**MAGNETHELMET**  
**REF : MAGNETHELMET**



**Description:**

Ear defenders for safety helmets. Adjustable in height. ABS arm and cups. Cups padded with synthetic foam. To use alone or with «VISOR HOLDER» faceshield holder. Suitable for QUARTZ, ZIRCON, GRANITE PEAK and BASEBALL DIAMOND V safety helmets. SNR = 32 dB.

**Materials:**

Cup & headband: ABS

Cushion: Foam & PVC

**Weight :** 370 g

**Sizes:** Single

**Colours:** Grey



**SPA3**  
**REF : SPA3**



**Description:**

Ear defender with polystyrene (PS) and synthetic foam cups. ABS headband, adjustable in height. Low pressure. SNR : 28 dB.

**Materials:**

Cup: Polystyrene (PS) / Cushion: Foam / Headband: ABS

**Weight :** 158 g

**Sizes:** Adjustable

**Colours:** Blue / Black



**CONIC200**  
**REF : CONIC200**



**Description:**

Distributor of 200 pairs of disposable earplugs packed in individual plastic bags by pairs.

**Materials:**

Polyurethane foam

**Colours:** Yellow





**CONICDIS**  
**REF : CONICDIS**



**Description :**

Dispenser for disposable earplugs with reload of 500 earplugs Ref. CONIC500

**Materials:**

Polyurethane foam rubber.

**Colours:** Blue

**CE** EN352-2

**CONICCO200**  
**REF : CONICO200**



**Description:**

Dispenser box of 200 pairs disposable polyurethane earplugs with plastic cord. Individual plastic bag of 2 earplugs.

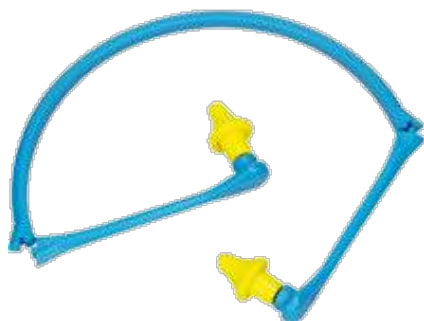
**Materials:**

Polyurethane foam

**Colours:** Yellow

**CE** EN352-2

**CONICAP01**  
**REF : CONICAP01**



**Description:**

Polyurethane foam earplugs, reusable, linked with a polypropylene folding head fastener which can be worn under the chin. Easy to tidy out, this product is perfect to be worn sporadically or occasionally. Packed in individual box.

**Materials:**

Polyurethane foam and polypropylene head fastener.

**Weight:** 15 g

**Colours:** Yellow / Black

**CE** EN352-2

**CONICFIT010**  
**REF : CONICFIT010**



**Description :**

Bag of 10 boxes of reusable silicone ear plug with nylon cord / ø7-11 mm (9 pairs in bag + 1 pair in storage plastic box)

**Materials:**

Flexible silicone. Nylon cord

**Weight :** 3 g

**Colours:** Navy Blue / Red



**REFLECTIVE BAND EARMUFF**  
**REF : REFLECTIVE BAND EARMUFF**



**Description:**

Waterproof cloth

Package: reflective fabric, Structure styles: rear-mounted, folding, adjustable size

**Materials:**

Fabric composition: 100% polyester

Bone arm: sub-zero Frost crack 40% bracket

**Sizes:** 35-40cm



**M1200VPW**  
**REF : M1200VPW**



**Description:**

Hypoallergenic to active charcoal non woven synthetic fibre filtering part FFP2 organic vapor (for concentration < VME). Nose clip for adjustment. Foam reinforcement under nose clip. Exhalation valve high performance. Foldable mask. Box of 10.

**Materials:**

Mask: non-woven synthetic.  
Straps : Rubber

**Colours:** Grey



**M1300VC**  
**REF : M1300VC**



**Description:**

Non woven synthetic fibre facial filtering part FFP3. Set of large adjustable straps. Moulded mask. Nose clip for adjustment. Integral ultra-soft facing joint. Exhalation valve high performance. Box of 5.

**Materials:**

Mask: non-woven synthetic.  
Set of large adjustable straps

**Colours:** White



**M1100C**  
**REF : M1100C**



**Description:**

Box of 20 non woven synthetic fibre disposable mask FFP1. Moulded mask. Nose clip for adjustment. Foam edge under nose clip.

**Materials:**

Non-woven synthetic fibre.  
Straps : Rubber

**Colours:** White



**1300VPC**  
**REF : 1300VPC**



**Description:**

Non woven synthetic fibre facial filtering part FFP3. Set of large adjustable straps. Nose clip for adjustment. Integral ultra-soft facing joint. Exhalation valve high performance. Foldable mask. Distributor box of 10.

**Materials:**

Mask: non-woven synthetic.  
Set of large adjustable straps

**Colours:** White



**M1300SM**  
**REF : 1300SM**



**Description:**

Reusable FFP3 dust mask. Reusable moulded mask shell in TPE shell. Replaceable non woven synthetic fibre disposable filter. Innovative system that reduces cost and optimizes comfort. High performance exhalation valve that serves to change the filter layer like a screw. Adjustable straps. Back fixing with clip. Sold by 1 box of 1 reusable moulded mask shell + 20 FFP3 spare disposable filters.

**Materials:**

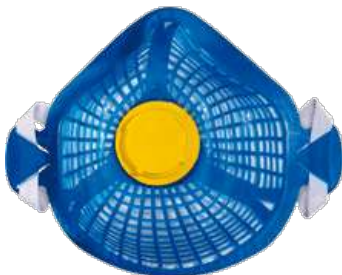
Non woven,  
Moulded mask in TPE

**Sizes:** Single

**Colours:** Blue



**M1200SM**  
**REF : M1200SM**



**Description:**

Reusable FFP2 dust mask. Reusable moulded mask shell in TPE shell. Replaceable non woven synthetic fibre disposable filter. Innovative system that reduces cost and optimizes comfort. High performance exhalation valve that serves to change the filter layer like a screw. Adjustable straps. Back fixing with clip. Sold by 1 box of 1 reusable moulded mask shell + 20 FFP2 spare disposable filters.

**Materials:**

Non woven,  
Moulded mask in TPE

**Sizes:** Single

**Colours:** Blue



**3M 9001V**  
**REF : 3M9001V**



**Description:**

Non-Woven Fabric+filter+needle punched filtering part FFP2. Moulded mask. Nose clip for adjustment.

**Materials:**

Non woven fabric

**Sizes:** Single

**Colours:** White

**CE** N90 FFP2

**M6200**  
**REF : M6200**



**Description:**

Thermo-plastic elastomer half mask (TPE). Elastic straps. Intended for 2 filtering cartridges of M6000 serie, sold separately.

**Materials:**

Half-mask : TPE.  
Elasticated straps

**Sizes:** Single

**Colours:** Blue

**CE** EN140

**M9200**  
**REF : M9200**



**Description:**

Silicone full face mask with innovative ROTOR® system adjustment (patented), one-hand use even when wearing gloves. Wide polycarbonate screen (210°). Inside silicone half-mask to reduce mist and increase comfort (3 inhalation valves, an exhalation valve, phonic system). Adjustable sizes : S, M, L. Compatible with EN148-1 type cartridges M9000 range, sold separately. Storage bag included.

**Materials:**

Silicone

**Sizes:** Adjustable

**Colours:** Black / Blue

**CE** EN136

**M6100**  
**REF : M6100**



**Description:**

Comfort half mask in tri-material : Half mask body in Thermo-plastic Elastomer (TPE) - Support for cartridge anchorage in polyethylene HD (HDPE) - Valve protective housing in polypropylene (PP). Elastic straps. To be used with 1 filter cartridges: M6000P3, M6000PREP3 or M6000A1, sold separately. Blister packaging.

**Materials:**

Half mask body : Thermo-plastic Elastomer (TPE)  
Support for cartridge anchorage i: polyethylene HD (HDPE)  
Valve protective housing : polypropylene (PP)

**Sizes:** Adjustable

**Colours:** Blue



**3M 7502 FULL SET**  
**REF : 3M 7502**

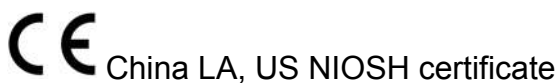


**Description:**

A set including: 1pcs main part 7502+2pcs of cartridges 6001+2pcs of filter discs 5N11+2pcs plastic ring 501

**Function:** Prevent Dust \ organic gas and steam-like benzene and its homologues such as gasoline, acetone, carbon disulfide, ether, etc.

**Application:** apply to painting, laboratories, chemical pesticide, medical, printing, molding, car repair painting mix above used poisonous gas environment.



**3M 3200 FULL SET**  
**REF : 3M 3200**



**Description:**

One set including: 1pcs of mask 3200CN+1pcs of cartridge 3001+1pcs of filter disc 3N11CN+1pcs of plastic ring 385CN

**Material:**

rubber

**Function:** Effective protection of organic gases and steam, such as benzene and its homologues, gasoline and carbon dioxide

**Application:** used for mixing paint, spray paint and organic steam generated in the process of respiratory protection



**3M 6200 FULL SET**  
**REF : 3M 6200**



**Description:**

This half facepiece reusable respirator offers reliable and convenient respiratory protection and is suitable for many situations, helping provide protection against particulates and a wide variety of gases and vapors according to NIOSH approvals. This series combines comfort and convenience. Comfortable soft, lightweight facepiece with easy-to-adjust head straps. NIOSH approved for negative pressure air purifying and supplied air dual airline applications. Can be disassembled, cleaned and reused

**Materials:**

Plastic cup and activated charcoal

**Sizes:** Medium



**3M 3200 FULL SET**  
**REF : M6000P2**



**Description:**

The 3M™ Reusable Half Face Mask Respirator 3200. Features include: An elastomeric face seal, M/L in size, it is a compact and lightweight half mask that offers an economical solution for a range of applications. Low profile design allows a wide field of vision. Lightweight makes long period of wear bearable. Soft, elastomeric face-fit secures a lasting comfort. Unique easy to don/doff strap system

**Sizes:** Medium



**M6200**  
**REF : M6200**



**Description :** Thermo-plastic elastomer half mask (TPE). Elastic straps. Intended for 2 filtering cartridges of M6000 serie, sold separately.

**Materials:** Half-mask : TPE. Elasticated straps

**Sizes:** Single

**Colours:** Blue



**M6300**  
**REF : M6300**



**Description:** Half mask in PP and TPE equipped with an adjustable elastic head harness in Dacron and Lactoprene and an exhalation valve in silicone. The half mask is equipped with one special bayonet connector including an inhalation valve in silicone (detailed description in EC type examination report 15.7.031.001)  
**Materials:** Half-mask : silicone Elasticated straps

**Sizes:** Single

**Colours:** Black

**CE** EN 136

**M6000P2**  
**REF : M6000P2**



**Description:**  
Pack of 2 P2 filtering cartridges for M6200-JUPITER half-mask.

**Materials:**  
Plastic cup and activated charcoal

**Sizes:** Single

**Colours:** White

**CE** EN143/A1

**M6000P3**  
**REF : M6000P3**



**Description:**  
Pack of 2 P3 filtering cartridges for M6200-JUPITER half-mask.

**Materials:**  
Plastic cup and activated charcoal

**Sizes:** Single

**Colours:** White

**Ref:** M6000P3

**CE** EN143/A1



**M6000A2**  
**REF : M6000A2**



**Description:**

Pack of 2 A2 average capacity filtering cartridges for M6200-JUPITER half-mask.

**Materials:**

Plastic cup and activated charcoal

**Sizes:** Single

**Colours:** Brown

**Ref:** M6000A2

**CE** EN14387

**M6000ABEK1**  
**REF : M6000ABEK1**



**Description:**

Pack of 2 A2 small capacity filtering cartridges for M6200-JUPITER half-mask.

**Materials:**

Plastic cup and activated charcoal

**Sizes:** Single

**Colours:** Brown / Grey / Yellow / Green

**Ref:** M6000ABEK1

**CE** EN14387

**M9000A2R**  
**REF : M9000A2R**



**Description:**

Filter cartridge of average capacity A2 for complete masks series M8000 and M9000

**Materials:**

Synthetic resin case, highly resistant to shocks and abrasions

**Colours:** Grey

**CE** EN148-1 EN14387

**M9000 A2B2E2K2**  
**REF : M9000 A2B2E2K2**



**Description:**

Filter cartridge of average capacity A2B2E2K2 for complete masks series M8000 and M9000.

**Materials:**

Synthetic resin case highly resistant to shocks and abrasions.

**Colours:** Brown / Grey / Yellow / Green

**CE** EN148-1 EN14387

**FP159**  
**REF : FP159**



**Description:**

Pigskin full grain leather glove, American cut, wing thumb, leather grain complete second finger, elasticated back, coloured border.

**Materials:**

Glove: pigskin leather grain, thickness : 0.7 mm to 0.9 mm.

**Sizes:** 09, 10

**Colours:** Buff



**NI155**  
**REF : NI 155**



**Description:**

Full nitrile-coated glove on jersey cotton support, ribbed cuff, thickness: 1.40 mm to 1.60 mm.

**Materials:**

Glove : 100% nitrile-coated and vulcanized (latex acrylonitrile butadiene).  
Cotton jersey lining.  
Knitted wrist cotton 250 g/m<sup>2</sup>.

**Sizes:** 10

**Colours:** Blue



**NI015**  
**REF : NI015**



**Description:**

Nitrile-coated glove on cotton jersey support, ventilated back, ribbed cuffs, thickness: 0.8 mm.

**Materials:**

Glove: 100% nitrile-coated and vulcanized (latex acrylonitrile butadiene). Cotton jersey lining.  
Knitted wrist cotton.

**Sizes:** 07, 08, 09, 10, 11

**Colours:** Yellow



**VE330**  
**REF : VE330**



**Description:**

Reinforced Natural latex glove for cleaning applications, bi-coloured double dipping, cotton flock lining, grip-pattern palm and fingers, indented cuff, length: 30 cm, thickness: 0.60 mm. Bacteriostatic and fungistatic additive.

**Materials:**

100% natural latex, yellow and blue shade.  
100% cotton

**Sizes:** 6/7, 7/8, 8/9, 9/10

**Colours:** Blue / Yellow

**CE** EN388 EN374-3 CATIII

**V1371**  
**REF : V1371**



**Description:**

Dispenser box with 100 ambidextrous gloves, powdered with cornstarch. Suitable for contact with food. Thickness: 0.125mm, AQL 1.5.

**Materials:**

100% vinyl (PVC).

**Sizes:** 6/7, 7/8, 8/9, 9/10

**Colours:** Transparent

**CE** EN374-2 EN374-1

**V1310**  
**REF : V1310**



**Description:**

Dispenser box with 100 latex ambidextrous gloves, powdered with cornstarch. Suitable for contact with food. Thickness: 0.125 mm. Cornstarch-powdering, AQL 1.5.

**Materials:**

100% natural latex.

**Sizes:** 6/7, 7/8, 8/9

**Colours:** Natural

**CE** EN374-2 EN374-3

**PVCC400**  
**REF : PVCC400**



**Description:**  
Chemical PVC glove. PVC on cotton jersey lining. Length: 40 cm. Thickness: 1,3 mm.

**Materials:**  
Glove: 100% PVC vulcanized and coated on cotton jersey support.  
Thickness : 1,20 - 1,40 mm

**Sizes:** 10

**Colours:** Red

**CE** EN388 EN374-3 EN374-2 CATIII

**VE530**  
**REF : VE530**



**Description:**  
Neoprene and latex blended glove, cotton flock lining, grip-pattern palm and fingers, indented cuff. Length: 30 cm and thickness: 0,70 mm. Bacteriostatic and fungistatic additive. Chlorinated outside.

**Materials:**  
100% neoprene and latex, navy blue shade.  
100% cotton flock lining

**Sizes:** 6/7, 7/8, 8/9, 9/10, 10/11

**Colours:** Navy Blue

**CE** EN388 EN374-3 CATIII

**VE630**  
**REF : VE630**



**Description:**  
Seamless knitted glove. 100% polyester. Latex coating on palm and fingertips. Gauge 13.

**Materials:**  
Glove : 100% polyester  
Coating: 100% natural latex

**Sizes:** 07, 08, 09, 10

**Colours:** Grey

**CE** EN388

**VE702P**  
**REF : VE702P**



**Description:**  
100% polyester, seamless. Polyurethane coating on palm and fingertips. Gauge 13. Colour-elasticated cuff .

**Materials:**  
100% polyester  
Coating : 100% polyurethane

**Sizes:** 06, 07, 08, 09, 10

**Colours:** White

**CE** EN388

**VE712GR**  
**REF : VE712GR**



**Description:**  
Seamless 100% polyester knitted glove. Nitril-coated palm and fingertips (ventilated back). Elasticated cuff.

**Materials:**  
100% polyester knit. Coating : 100% nitril.

**Sizes:** 07, 08, 09, 10

**Colours:** Grey

**CE** EN388

**VE722NO**  
**REF : VE722NO**



**Description:**  
Seamless 100% polyester knitted glove. Foam nitrile coating on palm and fingertips. Gauge 13.

**Materials:**  
Glove : 100% polyester.  
Coated : 100 % nitrile foam.

**Sizes:** 07, 08, 09, 10

**Colours:** Grey / Black

**CE** EN388

**VV750**  
**REF : V750**



**Description:**

Seamless knitted glove. Outside : 100% polyamide gauge 13. Inside : 100% acrylic gauge 7. 3/4 nitrile foam-coated on palm, fingers and half back.

**Materials:**

Glove : polyamide / acrylic.  
Coating : nitrile foam

**Sizes:** 09, 10

**Colours:** Black

**CE** EN388 EN511

**VE790**  
**REF : VE790**



**Description:**

Seamless polyamide/carbon knitted glove. Polyurethane coating on palm and fingertips (ventilated back). Gauge 13. Elasticated wrist.

**Materials:**

Knitted polyamide/carbon. Coating : 100% PU.

**Sizes:** 07, 08, 09

**Colours:** White

**CE** EN388 EN1149-1

**VE802**  
**REF : VE802**



**Description:**

Nitrile glove, finishing coated free of silicone, cotton flock lining, grip-pattern palm and fingers, straight cuff. Length: 33 cm, thickness: 0.40 mm. Chlorinated outside.

**Materials:**

100% nitrile (latex acrylonitrile butadiene: NBR) - Green shade.  
Cotton flock lining

**Sizes:** 6/7, 7/8, 8/9, 9/10, 10/11

**Colours:** Green

**CE** EN388 EN374-3 EN374-2 CATIII

**VE920**  
**REF : VE920**



**Description:**

Natural latex glove on jersey (Interlock) cotton support. Smooth exterior. Straight cuff. Length: 30 cm and thickness: 1,25 mm. Bacteriostatic and fungistatic treatment. Chlorinated outside and inside.

**Materials:**

100% natural latex, blue coloured - cotton support

**Sizes:** 6/7, 7/8, 8/9, 9/10, 10/11

**Colours:** Blue

**CE** EN388 EN374-3 EN407 CATIII

**VENICUT50**  
**REF : VECUT50**



**Description:**

Seamless knitted glove. TAEKI® 5 High performance polyethylene fibre. Cowhide on palm and fingertips. Gauge 10.

**Materials:**

Synthetic fibre TAEKI 5 (high performance)  
Cowhide leather

**Sizes:** 09, 10

**Colours:** Yellow / Grey

**CE** EN388 EN407



**VENICUT54**  
**REF : VECUT54**



**Description:**

Seamless knitted glove. TAEKI® 5 High performance polyethylene fibre. Nitrile coating on palm, fingers and half back. Gauge 13.

**Materials:**

Synthetic fibre TAEKI 5 (high performance)  
Coated : 100% nitril.

**Sizes:** 07, 08, 09, 10

**Colours:** Black

**CE** EN388 EN407

**DS202RP**  
**REF : DS202RP**



**Description:**

Lined cowhide Docker glove, American cut, artery protection, blue-leathered strengthening piece on index, cowhide complete fingertips, cowhide strengthening piece on back, white cotton cloth back and cuff, blue cowhide strengthening piece on palm and thumb, elasticated back, piping to protect seams on thumb and palm, cloth-lined palm and fingers.

**Materials:**

Palm : cowhide, thickness: 0.9 mm to 1.1 mm. Reinforcement : cowhide split thickness between 0.9 and 1.1 mm. Back : white canvas cotton 150 g/m<sup>2</sup>. Cuff : white cotton 220 g/m<sup>2</sup>.

**Sizes:** 10

**Colours:** Grey / Blue

**CE** EN388

**CA515R**  
**REF : CA515R**



**Description:**

Welder's glove. Heat-resistant cowhide split leather (HR). Hand with cotton fleece lining. Cuff with canvas lining. American assembly. Length : 35 cm.

**Materials:**

Heat-resistant leather, thickness: 1.2mm to 1.4mm.  
Lined hand : swansdown.  
Lined cuff : cotton cloth 300 g/m<sup>2</sup>.

**Sizes:** 10

**Colours:** Red

**CE** EN388 EN407 EN12477

**VV900**  
**REF : VV900**



**Description:**

Glove with Polyester/polyurethane back. PVC reinforcements. Polyamide/polyurethane palm with PVC dots. 8 cm cuff in neoprene.

**Materials:**

Palm : Polyamid/polyurethane microfibre.  
Dots : PVC.  
Back : Polyester/polyurethane knitted.  
Back reinforcement : PVC  
Cuff : Neoprene.

**Sizes:** 08, 09, 10, 11

**Colours:** Yellow / Grey

**CE** EN388 EN1621-2

**VV903**  
**REF : VV903**



**Description:**

Polyester back coated with polyurethane. Polyurethane/polyester palm. Neoprene cuff. 3M Thinsulate™ lining: Resistant to cold. Repellent back.

**Materials:**

See description.

**Sizes:** 07, 09, 11

**Colours:** Grey / Black

**CE** EN388

**WONDER GRIP**  
**REF : WONDER GRIP**



**Description:** protective waterproof non-slip

Low temperature of 25 degrees

Operating environment: winter, outdoor, low temperature, cold, damp-warm environment

**Features:**

1. ergonomic hand designed to improve operating comfort and sensitivity, reduce fatigue  
2. Palm impregnated and double dipping using a special premium finish technology, grip strength better and superior slip resistance  
3. dip designed to prevent air and water infiltration, adapt to various types of low-temperature and humidity environments  
4. Advanced 13-pin acrylic seamless loop knitting technique, gloves with excellent thermal properties

**Brand:** wonder grip

**Colours:** Orange

**Lining:** acrylic, Dipping: double LaTeX immersed

**Size:** S M L XL

**CE**

**GLOVE CLIP**  
**REF : GLOVE CLIP**



**Description:**

Ergonomic design, gently pinch to open, release and close. Easy to use, a grip gloves, on the belt loop of a clip on your belt or pants, easy access at any time, Save gloves, can ensure that workers do not readily use gloves discarded. High elastic, grip work, let your gloves are always on your side.

**Materials:** Plastic

**Sizes:** Total length: 13cm

**Colours:** Grey / Black



**GARGAS2S1P**  
**REF : GARGAS2S1P**



**Description :**

Boot range CLASSIC +. Upper : Pigmented split leather. Lining : Polyamide absorbing. Footbed : Fixed - Polyamide on EVA. Outsole : Injected - Dual-density PU.

**Materials :**

Upper : split leather

**Sizes:** 35, 36, 37, 38, 39, 40, 41, 42, 43, 44, 45, 46, 47, 48

**Colours:** Black

**CE** EN ISO 20345

**GOULT2S1P**  
**REF : GOULT2S1P**



**Description :**

Shoes range CLASSIC +. Upper : Pigmented split leather. Lining : Polyamide absorbing. Footbed : Fixed - Polyamide on EVA. Outsole : Injected - Dual-density PU.

**Materials :**

Upper : pigmented split leather

**Sizes:** 35, 36, 37, 38, 39, 40, 41, 42, 43, 44, 45, 46, 47, 48

**Colours:** Black

**CE** EN ISO 20345

**SAFTETOE**  
**REF : SFTOEE HS1004**



**Description**

PU injection, steel toe and steel plate, middle cut. Midsole and outsole: PU

**Materials :**

Embossed Split Leather, non-woven fabric

**Sizes:** 35, 36, 37, 38, 39, 40, 41, 42, 43, 44, 45, 46, 47, 48

**Colours:** Black

**CE** EN ISO 20345      ASTM F 2 413 EH

**ROCKLANDER 4X4**  
**REF : ROCKLANDER HS1010**



**Description:**

PU injection, steel toe and steel plate, middle cut.  
Midsole and outsole: PU  
Shock absorber

**Materials:**

Leather upper

**Sizes:** 35, 36, 37, 38, 39, 40, 41, 42, 43, 44, 45, 46, 47, 48

**Colours:** Black

**CE** EN ISO 20345      ASTM F 2 413 EH

**VIAGIS1PESD**  
**REF : VIAGIS1PESD**



**Description :**

LIGHT WALKERS range ESD shoes. Upper : Suede split leather and polyester mesh.  
Lining : Polyester. Insole : Removable preformed - Polyester on EVA. Outsole : Injected - Dual-density PU. Non metallic shoes.

**Materials :**

see description

**Sizes:** 36, 37, 38, 39, 40, 41, 42, 43, 44, 45, 46, 47, 48

**Colours:** Black / Red

**CE** EN ISO 20345      EN 61340-4-3 CLASS 1

**VIAGIS1P**  
**REF : VIAGIS1P**



**Description:**

Shoes range LIGHT WALKERS. Upper : Suede split leather and polyester mesh. Lining : Polyester. Insole : Removable preformed - Polyester on EVA. Outsole : Injected - Dual-density PU. Non metallic shoes.

**Materials:**

see description

**Sizes:** 36, 37, 38, 39, 40, 41, 42, 43, 44, 45, 46, 47, 48

**Colours:** Beige/Orange, Black / Red, Grey / Green, Taupe/Red

**CE** EN ISO 20345      ASTM F 2 413 EH

**PERTUISS1P**  
**REF : PERTUIS**



**Description:**

Safety shoes low upper type basket  
Upper : Low cut, split leather and nylon polyamid  
Lining : Absorbent polyamide  
Insock: Fixed, polyamide on foam  
Outsole : Cemented, phylon midsole, rubber outsole  
Toe cap and puncture-proof sole

**Materials:**

Upper : Split leather /polyamid.  
Insole : Polyurethane.  
Toe cap and puncture-proof sole : stainless steel.

**Sizes:** 36, 37, 38, 39, 40, 41, 42, 43, 44, 45, 46

**Colours:** Brown

**CE** EN ISO 20345

**TW400S3SRC**  
**REF : TW400S2**



**Description:**

Boots range TREK WORK. Upper: Full grain leather. Lining: Polyamide Cambrelle. Insole: Removable preformed - Polyester on EVA. Midsole: Cemented - PU with Panoshock® shock absorber. Outsole: Rubber Nitrile. Non metallic footwear.

**Materials:**

See description.

**Sizes:** 39, 40, 41, 42, 43, 44, 45, 46, 47, 48

**Colours:** Black

**CE** EN ISO 20345

**DSPiRiT S1P**  
**REF : DSPiRiT S1PNO**



**Description:**

Shoes range SPORTSWEAR. Upper: Full grain leather and mesh. Lining: Polyester. Insole : Fixed - Polyester on EVA. Midsole : cemented - PU/rubber. Non metallic footwear.

**Materials:**

See description.

**Sizes:** 38, 39, 40, 41, 42, 43, 44, 45, 46, 47

**Colours:** Black/Brown

**CE** EN ISO 20345

**MAUPEC3**  
**REF : MAUPEC3**



**Description:**

AGRO range clogs. Upper : Microfibre. Lining : Polyamide. Insole : Preformed removable - Polyamide on EVA. Outsole : Injected - Dual-density PU.

**Materials:**

See description

**Sizes:** 35, 36, 37, 38, 39, 40, 41, 42, 43, 44, 45, 46, 47

**Colours:** White

**CE** EN ISO 20345

**LANTANA S1P**  
**REF : LANTANAS1P**



**Description:**

Boots range 4x4 INDUSTRY. Upper : Buffalo pigmented split leather. Lining : Polyamide absorbing. Insole : Removable - Polyamide on EVA. Midsole : Injected - Panorubber®. Outsole : Rubber Nitrile.

**Materials:**

See description

**Sizes:** 36, 37, 38, 39, 40, 41, 42, 43, 44, 45, 46, 47, 48

**Colours:** Black

**CE** EN ISO 20345

**NAVARA S1P**  
**REF : NAVARAS1P**



**Description:**

Shoes range 4x4 INDUSTRY. Upper : Buffalo pigmented split leather. Lining : Polyamide absorbing. Insole : Removable - Polyamide on EVA. Midsole : Injected - Panorubber®. Outsole : Rubber Nitrile.

**Materials:**

See description

**Sizes:** 36, 37, 38, 39, 40, 41, 42, 43, 44, 45, 46, 47, 48

**Colours:** Black

**CE** EN ISO 20345

**OHIO 2 S3**  
**REF : OHIO2S3**



**Description:**

Boots range OUTDOOR 2. Upper : nubuck leather. Lining : Polyester. Insole : Removable preformed - Polyester on EVA foam. Outsole : Cemented - PU / Rubber Nitrile. Non metallic boots.

**Materials:**

see description

**Sizes:** 36, 37, 38, 39, 40, 41, 42, 43, 44, 45, 46, 47, 48

**Colours:** Black

**CE** EN ISO 20345

**DEVON**  
**REF : DEVON3S3**



**Description:**

WINTER BOOT range fur-lined boots. Upper : Pigmented split leather. Lining : Acrylic furlined. Insole : Removable acrylic furlined. Outsole : Injected - Dual-density PU.

**Materials:**

see description

**Sizes:** 39, 40, 41, 42, 43, 44, 45, 46, 47

**Colours:** Black

**CE** EN ISO 20345



**HA001**  
**REF : HA001**



**Description:**

Full body harness with back attachment, made of 45 mm wide red polyester straps and two corrosion-resistant parachute buckles at the thigh level, to open and easily adjust the harness.

**Materials:**

Straps : red polyester.

CE EN 361

**HAR12**  
**REF : HAR12**



**Description:**

2 fall arrester anchorage point harness (back - front). 2 adjustment loops.

**Materials:**

Straps : polyester.

**Weight :** 0,7 kg.

**Sizes:** S/M/L, XL/XXL

**Colours:** Orange

CE EN 361

**HAR14**  
**REF : HAR14**



**Description:**

2 fall arrester anchorage point harness (back - front). 2 adjustment loops. 2 adjustable lateral plates. Positioning belt with broad thermoformed back. Sponge lining. 2 anchorage points for work positioning.

**Materials:**

Straps : polyester.

Belt : Sponge lining.

**Weight :** 1,1 kg.

**Sizes:** S/M/L, XL/XXL

**Colours:** Orange

CE EN361 EN358

**HAR24**  
**REF : HAR24**



**Description:**

Harness with extensible "Riplight System II®" patented waves with positioning belt. 2 fall arrester anchorage points (back - front). 4 adjustable buckles. Positioning belt with thermoformed back closed with wide Velcro. 120° rotation. Large thermoformed back with sponge lining. 2 lateral anchorage points for work positioning.

**Materials:**

Straps : polyester.  
Belt : Sponge lining.

**Weight :** 1,8 kg.

**Sizes:** S/M/L

**Colours:** Black / Orange-coloured



**HA054**  
**REF : HA054**



**Description:**

Full body harness with back and chest attachments, made of 45-mm wide red polyester straps, and two corrosion-resistant parachute buckles at the thigh level for opening and easy adjustment of the harness.

**Materials:**

Straps: polyester.

**Sizes:** M, L, XL

**Colours:** Red



**HA060**  
**RE : HA060**



**Description:**

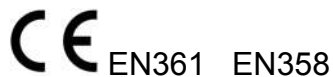
Expert range fall arrest harness made of 45-mm straps and consists of:  
- 2 attachments points (rear - chest).  
- 1 work positioning belt with 2 lateral attachment and 1 textile thermo-formed back support.  
- 1 semi-rigid saddle in textile.  
- elastic straps.  
- quick buckles at thigh level and continuous adjustment buckles at shoulder's level.

**Materials:**

Straps: polyester.

**Sizes:** Adjustable

**Colours:** Navy Blue / Black



**HA098**  
**REF : HA098**



**Description:**

This full body harness light and easy to put on and to adjust, is intended for incorporation in a fall arrest system. It is made of 45-mm straps, it consists of dorsal and front attachments, and quick buckles at thigh level.

**Materials:**

Straps: polyester.

**Sizes:** Adjustable

**Colours:** Red / Grey

**CE** EN361

**HAR35 EOLIEN**  
**REF : HAR35**



**Description:**

Two colour harness with positioning belt. 3 fall arrester attachment points (back- front right side - front left side). 4 adjustable buckles in light alloy. 2 automatic buckles. Positioning belt with thermoformed back closed with wide Velcro for more comfort. 120° rotation. 2 lateral anchorage points. 1 adjustment loop. Sponge back lining.

**Materials:**

Straps : polyester.

Belt : Sponge lining.

**Weight :** 2 kg.

**Sizes:** S/M/L, XL/XXL

**Colours:** Orange

**CE** EN358 EN361

**HA644**  
**REF : HA644**



**Description:**

Full body harness with 2 attachments points HA644, indissociable, including a full body harness HA044 and a vest.

\* Full body harness with bicoloured polyester straps (45 mm): front and back attachment, ventral belt, karabiner, quick buckles at thigh level.

\* One size polyester vest closed by zip including 2 low pockets closed by zip. Fabric parts made of Cordura® or of knitted fabric 3D. Spine protection. Waist level adjustments on each side by elastic waistband with stoppers. Net fabric lining.

**Materials:**

Straps : polyester

Vest : polyester

**Sizes:** L, XL

**Colours:** Black / Orange-coloured

**CE** EN361

**EX021**  
**REF : EX21**



**Description:**

Adjustable work positioning lanyard via reducer. Adjustable length: 1.10 to 2 m. Stranded rope Ø 12 mm. Protective sheath on the splices.

**Materials:**

Polyamide.

**Weight:** 0,3 kg.

**Colours:** White / Grey

**CE** EN358

**LV201**  
**REF : LV201**



**Description:**

Temporary horizontal lifeline with certified strap for 2 people. Adjustment of the length and the tension with a ratchet tensioner. Equipped with 2 carabiners AM002. Bag for storage and transport.

**Materials:**

Buckles: Leather.

Strap: Polyester.

AM002: Galvanized steel.

**Weight:** 3,3 kg.

**Colours:** Yellow

**CE** EN355

**AN209CC**  
**REF : AN209CC**



**Description:**

Fall arrester with energy absorber in lanyard webbing. Thimble loops. Length: 2 m. 2 Screw lock carabiners in galvanized steel, opening 17 mm (AM002).

**Materials:**

Lanyard: Polyester.

Carabiner: galvanized steel.

**Weight:** 0,7 kg

**CE** EN355

**AN219CDD**  
**REF : AN219CDD**

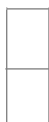


**Description:**

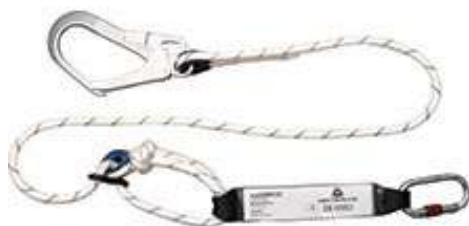
Fall arrester with energy absorber in double lanyard webbing (Y). Thimble loops. Length: 2 m. 3 Screw lock carabiners in galvanized steel, opening 17 mm (AM002).

**Materials:**

Lanyard: Polyester.  
Carabiner: galvanized steel.  
**Weight:** 1,3 kg



**AN208RCD**  
**REF : AN208RCD**



**Description:**

Fall arrester with energy absorber in braided rope Ø 12 mm, simple and adjustable by means of a gear ring on the rope. Length: 1.50 to 2 m. 1 Screw lock carabiner in galvanized steel, opening 17 mm (AM002). 1 Automatic hook lock in galvanized steel, large opening 55 mm (AM022).

**Materials:**

Rope: Polyamide.  
Absorber: Polyester.  
Carabiner and hook: galvanized steel.  
**Weight :** 1,3 kg



**AN213CDD**  
**REF : AN213CDD**



**Description:**

Fall arrester with energy absorber in double lanyard strap (Y). Thimble loops. Length: 2 m. 1 Screw lock carabiner in galvanized steel, opening 17 mm (AM002). 2 Automatic hooks lock in galvanized steel, large opening 55 mm (AM022).

**Materials:**

Lanyard: Polyester.  
Carabiner and hook: galvanized steel.  
**Weight:** 1,8 kg

**Colours:** Orange



**AN230CD**  
**REF : AN230CD**



**Description:**

Fall arrester with energy absorber in woven webbing with integrated crumple on the lanyard. Retracted length: 1.40 m. Stretched length: 2 m. 1 Screw lock carabiner in galvanized steel, opening 17 mm (AM002). 1 Automatic hook lock in galvanized steel, large opening 55 mm (AM022).

**Materials:**

Polyester.  
Carabiner and hook: galvanized steel.  
**Weight:** 1 kg

**Colours:** Black



**SLIDING FALL ARRESTER ON Ø 12 MM ROPE ANCHORAGE LINE - 10 M**  
**REF: AN063**



**Description :**

Sliding non opening fall arrester set with fall indicator on stranded rope anchorage line Ø 12 mm. Wear indicator. 1 loop spliced on high end. Length: 10 m.

**Materials:**

Fall arrester: Stainless steel.  
Rope: Polyamide.  
Carabiner : Zinc-coated steel.

**Weight :** 1,3 kg.



**SCREW SAFETY KARABINER**  
**REF:AM002**



**Description:**

Screw safety karabiner provided with a double locking mechanism. 17-mm opening. Screw manual locking type. Anticorrosion coating and antilocking of the locking ring.

**Materials:**  
Zinc-coated steel.

**Weight:** 0,17 kg

**Colours:** Steel



**AUTOMATIC LOCK HOOK, 55 MM OPENING - PACK OF 2**  
**REF: AM022**



**Description :**

Automatic lock hook in zinc-coated steel. Large opening 55 mm. Eye hook. R> 20 kN.

**Materials:**

Zinc-coated steel.

**Weight :** 0,50 kg.

**Colours:** Steel

**CE** EN 362

**STRAP SELF-RETRACTABLE FALL ARRESTER + 1 AM002 - 2.5 M**  
**REF: AN102**



**Description :**

Self retractable fall arrester with 46 mm strap with energy dissipater. Protection case. 1 carabiner AM002.

**Materials:**

Strap : polyester.

Casing: plastic.

Carabiner : steel.

**Weight:** 1,1 kg.

**CE** EN 360

**PROTECTOR ELEVATOR 20 M**  
**REF:TR007**



**Description :**

Self retractable fall arrester in steel cable with removable rescue winch. Steel case. Inertia locking system. Energy absorber. Length: 20 m. 1 connector AM020.

**Materials:**

Cable: steel.

Casing: steel.

Winch: steel.

Connector: light alloy.

**Weight:** 14,9 kg.

**CE** EN 360 EN 1496 CLASS B

**TELESCOPIC TRIPOD WITH ANCHORAGE RING + 2 PLATES - 1,45 TO 2,15 M**  
**REF: TR022**



**Description :**

Telescopic tripod in galvanized steel. Adjustable height from 1.45 m to 2.15 m. Maximum wheelbase of 1.50 m on the ground. 1 central anchorage ring for a fall arrest. Equipped with two adjustable plates for a self retractable fall arrester.

**Materials:**

Galvanized steel.

**Weight :** 26 kg.

**Colours:** Steel

**CE** EN 795 CLASS B

**ALUMINIUM VENTRAL BLOCKER**  
**REF: TC001**



**Description :**

Ventral opening blocker type in aluminium alloy. Works on braided rope Ø 8 to 13 mm.

**Materials:**

Aluminium alloy.

**Weight:** 0,16 kg.

**Sizes:** Single

**Colours:** Red

**CE** EN 567

**ALUMINIUM ASCENSION HANDLE - RIGHT HAND**  
**REF: TC002**



**Description :**

Right hand ascension handle in aluminium alloy. Works on braided rope Ø 8 to 13 mm.

**Materials:**

Aluminium alloy.

**Weight:** 0,24 kg.

**Colours:** Blue

**CE** EN 567



**FIGURE OF EIGHT IN ALUMINIUM**  
**REF:TC004**



**Description:**

Figure of eight in aluminium alloy. Works on braided rope  $\varnothing$  9 to 12 mm.

**Materials:**

Aluminium alloy.

**Weight:** 0,13 kg.

**CE** EN 12278

**DOUBLE PULLEY WITH OSCILLATING FLANGES IN ALUMINIUM**  
**REF:TC015**



**Description:**

Double pulley with oscillating flanges in aluminium alloy for braided rope less than  $\varnothing$  16 mm.

**Materials:**

Aluminium alloy

**Weight:** 0,43 kg.

**CE** EN 12278

**HIGH VISIBILITY JACKET AND PANT**  
**REF : 80302 (G472 ORANGE) / 80301 (G472 YELLOW)**



**Description:**

Treatment teflon (water repellent, oil and stain release), 3M Scotchlite Reflective Materials, application: outdoor workers.

**Materials:**

Woven polyester / cotton twill fabric

**Colours:** Two-tones, orange and dark grey or yellow and dark grey

**CE** ISO 20471 Class 2 EN471

**HIGH VISIBILITY POLO - SHIRT**  
**REF : 80201 (E773 YELLOW) / 80202 (E773 ORANGE)**



**Description:**

Polyester with wicking treatment, treatment moisture wicking, application outdoor workers or manager, 3M Scotchlite Reflective Materials in AMS patented Pattern

**Materials:**

Polyester with wicking treatment

**Colours:** Yellow or Orange

**CE** ISO 20471 Class 2 EN471

**HIGH VISIBILITY SURVEYOR VEST**  
**REF : 80107 (A516)**



**Description:**

3M Scotchlite Reflective Materials, Application engineering staff in transportation, municipal administration, sanitation, construction etc.

**Materials:**

Polyester Knitted Fabric

**Colours:** Two- Tone (yellow and dark blue)

**CE** GB20653 EN471

**HIGH VISIBILITY 3-IN-1 THERMAL PARKA**  
**REF : 80504 (B008 ORANGE) / 80503 (B008 YELLOW)**



**Description:**

3M Scotchlite Reflective Materials, 3M Scotchlite Reflective Materials, 3M Thinsulate Thermal Insulation Materials

**Materials:**

Polyester woven oxford with breathable PU coating,

**Colours:** Two-Tone (orange and dark blue / yellow and dark blue)

**CE** ISO 20471 CLASS 3 EN471

**HIGH VISIBILITY RAINCOAT**  
**REF : 80602 (D012 / C001 ORANGE)**



**Description:**  
3M Scotchlite Reflective Materials

**Materials:**  
Polyester woven oxford with breathable PU Coating

**Colours:** Orange

**CE** ISO 20471 CLASS 3 EN471

**WARNING RAINCOAT**  
**REF : 80603 (D040 / CO11)**



**Description:**  
3M Scotchlite Reflective Materials, Outdoor workers

**Materials:**  
Polyester Woven Oxford with breathable PU Coating

**Colours:** Dark Blue

**CE** ISO 20471 CLASS 3 EN471

**HI – VIS HOODIE**  
**REF : HVK05**



**Description:**  
High Visibility Hoodie

**Materials:**

**Sizes:** S- 3XL

**Colours:** Yellow, Orange

**CE** GB20653 EN471

**HI – VIS SWEAT SHIRT**  
**REF : HVJ510**



**Description:**  
High Visibility Sweet Shirt

**Materials:**

**Sizes:** S- 3XL

**Colours:** Yellow, Orange

**CE** GB20653 EN471

**HI-VIS MOTORWAY JACKET**  
**REF : HVP300**



**Description:**  
Classic Motorway jacket

**Materials:**

**Sizes:** S-6XL

**Colours:** Yellow, Orange

**CE** GB20653 EN471

**EN400RE**  
**REF : EN400RE**



**Description:**  
Rain jacket and trousers. Sewn and taped sealed seams. Hooded jacket with hood cord. Zip fastener. Wind-resistant flap inside. Raglan sleeves with press-studded cuffs. Air vents on armholes. Dorsal flap with ventilation. 2 flapped pockets. Waist cord trousers. Press-studded lower part of legs. 2 open pockets. 3M Reflective band.

**Materials:**  
PVC-coated 100% polyester support internal side 190gr/m<sup>2</sup>.

**Sizes:** M, L, XL, XXL

**Colours:** Green, Navy Blue, Royal Blue, Yellow

**CE** EN343 EN471

**OPTIMUM**  
**REF : OPTIMUM**



**Description :**

PARKA 4 IN 1: REMOVABLE BODYWARMER Parka : Waterproof seams. Fastening with zip under storm flap. Fixed hood. High visibility : Class 3 - Silver colour - Shoulderbelt and parallel assembly. 4 pockets. Removable bodywarmer : Waterproof seams. Removable sleeves. 4 pockets. High visibility : Class 2 - Silver colour - Shoulderbelt assembly.

**Materials:** 100% Polyester Oxford with PVC-coating - 250 g/m<sup>2</sup> Fixed lining Taffetas 190T 100% Polyester - 55 g/m<sup>2</sup> Removable bodywarmer 100% Polyester Oxford with PVC-coating - 250 g/m<sup>2</sup> with removable sleeves in polar 100% polyester - 220 g/m<sup>2</sup> Lining Taffetas 100% Polyester quilted - 55 g/m<sup>2</sup> Stuffing : 100% polyester - 100 g/m<sup>2</sup> NESTAR REF 2471 retroreflecting stripes 80% polyester, 20% cotton PU coated and glass beads (25 washings at 30°C).

**Sizes:** S - M - L - XL - XXL - XXXL

**Colours:** Fluorescent Orange-coloured / Navy Blue - Fluorescent Yellow / Navy Blue

**CE** EN471 EN343 EN471

**PHVES JACKET – FIRE RETARDANT OR NO FIRE RETARDANT**  
**REF : PHVES**



**Description:**

PANOSTYLE high-visibility working jacket. Elasticated cuffs. 2 pockets. High visibility : Class 2 - Silver colour - Shoulder-belt and parallel assembly.

**Materials:**

54% Cotton / 46 % Polyester - 260 g/m<sup>2</sup>.  
Retroreflecting stripes 100% polyester.

**Sizes:** S, M, L, XL, XXL, XXXL

**Colours:** Fluorescent Orange-coloured / Navy Blue, Fluorescent Yellow / Navy Blue

**CE** EN14116 EN471

**PHPAN PANT – FIRE RETARDANT OR NO FIRE RETARDANT**  
**REF : PHPAN**



**Description:**

PANOSTYLE high-visibility working trousers. Elasticated waist on both sides. High visibility : Class 2 - Silver colour. 5 pockets including 1 ruler pocket.

**Materials:**

54% Cotton / 46 % Polyester - 260 g/m<sup>2</sup>.  
Retroreflecting stripes 100% polyester.

**Sizes:** S, M, L, XL, XXL, XXXL

**Colours:** Fluorescent Orange-coloured / Navy Blue, Fluorescent Yellow / Navy Blue

**CE** EN14116 EN471

**EASYVIEW WINTER JACKET**  
**REF : EASYVIEW**



**Description:**

Rain warm parka. Waterproof seams. Fixed hood. Fastening with zip under Velcro storm flap. High visibility : Class 3 - Silver colour - Shoulder-belt and parallel assembly. 4 pockets.

**Materials:**

Outside:

- Fluorescent yellow (or orange) material: 100% internal polyester coated polyurethane (200 g/m<sup>2</sup>)

- Navy blue material: 100% internal polyester coated polyurethane (200 g/m<sup>2</sup>)

Lining : 100% polyester (45 g/m<sup>2</sup>)

Stuffing : 100% polyester (160 g/m<sup>2</sup> for body, 120 g/m<sup>2</sup> for sleeves)

NESTAR REF 2471 retroreflecting stripes 80%polyester, 20% cotton PU coated and glass beads (25 washings at 30°C).

**Sizes:** S, M, L, XL, XXL, XXXL

**Colours:** Fluorescent Orange-coloured / Navy Blue, Fluorescent Yellow / Navy Blue

**CE** EN343 EN471 EN14058

**COVERALL FIRE RETARDANT 3M REFLECTIVE BAND**  
**REF : COVERALL**



**Description :**

12 oz. 100% cotton 350 gsm fr twill, 2" FR Reflective yellow/silver/yellow striping

Two way breakaway zipper with storm flap

Fold-down collar

Two front upper pockets

Two back pockets

Two front slash pockets with side access

Tool pocket on rear right leg

True bi-swing action back for flexibility and easy movement

**Sizes:** S, M, L, XL, XXL, XXXL

**Colours:** Blue, Red, Orange, and Yellow



**CE** EN531 EN533 EN14116 EN471

**WINTER JACKET FIRE RETARDANT 3M**  
**REF : WJFR**



**Description:**

Rain warm parka. Waterproof seams. Fixed hood. Fastening with zip under Velcro storm flap. High visibility : Class 3 - Silver colour - Shoulder-belt and parallel assembly. 4 pockets.

**Materials:**

Outside: Fluorescent yellow (or orange) material: 100% cotton, 350 gsm FR

**Sizes:** S, M, L, XL, XXL, XXXL

**Colours:** Fluorescent Orange-coloured / black, Fluorescent Yellow / black



**CE** EN14058 EN343 EN471 EN14116

**BORCO FIRE RETARDANT**  
**REF : BORCO**



**Description:**

BORNEO overalls. Straight collar closed with hidden press studs. Fastening with hidden press studs. Elasticated waist at the back. Half elasticated wrists. 6 pockets including 1 ruler pocket. 2 hand slits.

Available in :

- navy blue color (ref. BORCOBM) - Kneepad pocket inside.
- orange with retro-reflective bands (ref. BORCOOV)

**Materials:**

Ripstop 55% Modacrylic Staciflam®, 42% cotton, 3% antistatic fibre 295 g/m<sup>2</sup>.

**Sizes:** S, M, L, XL, XXL, XXXL, XXXXL

**Colours:** Navy Blue, Orange



EN531 EN533 EN14116 EN471

**SUMMER OVERALL FIRE RETARDANT & NO-FIRE RETARDANT**  
**REF : SOFR/SONFR**



**Description:**

Shirt and pant for summer season.  
Reflective band

**Materials:**

Cotton (150-180 g/m<sup>2</sup>)

**Sizes:** S, M, L, XL, XXL, XXXL, XXXXL

**Colours:** Orange/Black, Yellow/Black



EN14116 EN1149-5 EN471

**GILP4**  
**REF : GILP4**



**Description:**

High visibility vest. Fastening with Velcro band. High visibility: Class 2

**Materials:**

Polyester fabric  
Reflective sewn band

**Sizes:** L, XL

**Colours:** Orange, Yellow



EN471



**FIDJI**  
**REF : FIDJI**



**Description:**

Vest. PVC-coated polyester pongee. Polar lining. Fastening : zip. Pockets : 4. Kidneys protection. Ease zip on sides.

**Materials:**

Outshell: 100% polyester Pongee PVC-coated - 160 g/m<sup>2</sup>  
Lining: 100% polyester polar - 270 g/m<sup>2</sup>  
Padding: 100% polyester - 200 g/m<sup>2</sup>

**Sizes:** S, M, L, XL, XXL

**Colours:** Black, Grey / Black, Orange-coloured / Grey



**DUNCAN**  
**REF : DUNCAN**



**Description:**

Parka. Waterproof seams. Fastening with zip under Velcro storm flap. Removable hood. Underarm ventilation with eyelets. Adjustable bottom of garment with elastic drawstring. 5 pockets.

**Materials:**

PVC-coated Ripstop polyester fabric.  
Top lining : Wadded polyester polar fleece 280 g/m<sup>2</sup>. Bottom lining : Wadded polyester Taffeta.  
Wadding: 100% polyester 160 g/m<sup>2</sup>.

**Sizes:** S, M, L, XL, XXL, XXXL

**Colours:** Grey, Navy Blue



EN14058 EN343

**LIDINGO**  
**REF : LIDINGO**



**Description:**

Rain suit: jacket and trousers. Waterproof seams.  
Jacket: Fixed hood. Fastening with zip under Velcro storm flap. Adjustable bottom of garment with elastic drawstring. 5 pockets.  
Trousers: Elasticated waist. Adjustable bottom by press studs. 2 pockets.

**Materials:**

Shell: Polyester with PVC Coating  
Lining: 100 % Polyester

**Sizes:** S, M, L, XL, XXL, XXXL

**Colours:** Navy Blue



EN343

**MA305**  
**REF : MA305**



**Description:**

Raincoat with sewn and sealed seams. Fixed hood with cord, press-studded flapped fastening, wind-resistant flap inside, raglan sleeves with wind-resistant cuffs inside, 2 flapped patched pockets, length: 1.20m.

**Materials:**

PVC/Polyester/PVC

**Sizes:** M, L, XL, XXL

**Colours:** Green, Yellow



**MA400**  
**REF : MA400**



**Description:** Rain coat. Sealed seams. Fixed hood. Fastening with double press-studs flap. Raglan sleeves. Elasticated inside cuffs. 2 pockets.

**Materials:** PVC-coated 100% polyester support internal side 190 gr/m<sup>2</sup>.

**Size:** M - L - XL - XXL

**Colours:** Green - Yellow



**EN400**  
**REF : EN400**



**Description:**

Rain jacket and trousers. Sewn and taped sealed seams. Hooded jacket with hood cord. Zip fastener. Wind-resistant flap inside. Raglan sleeves with press-studded cuffs. Air vents on armholes. Dorsal flap with ventilation. 2 flapped pockets. Waist cord trousers. Press-studded lower part of legs. 2 open pockets.

**Materials:**

PVC-coated 100% polyester support internal side 190gr/m<sup>2</sup>.

**Sizes:** M, L, XL, XXL

**Colours:** Green, Navy Blue, Royal Blue, Yellow



**HAMPTON**  
**REF : HAMPTON**



**Description:**

Parka.  
Quilted removable hood.  
Fastened with a zip under the storm flap with buttons.  
Adjustable waist and bottom with elastic drawstring.  
8 pockets.

**Materials:**

Quilted twill 65% polyester 35% cotton 245g/m<sup>2</sup>.  
Quilted polyester Taffeta lining.

**Sizes:** XS, S, M, L, XL, XXL, XXXL

**Colours:** Grey / Yellow



EN14058 EN343

**NORDLAND**  
**REF : NORDLAND**



**Description:**

Parka.  
Waterproof seams.  
Removable hood.  
Collar with polar fleece lining.  
Fastening with zip under press stud storm flap.  
Adjustable waist and bottom with elastic drawstring.  
7 pockets.

**Materials:**

Polyurethane-coated Oxford polyester fabric.  
Quilted polyester Taffeta lining.

**Sizes:** S, M, L, XL, XXL, XXXL

**Colours:** Grey



EN14058 EN342 EN343

**ICEBERG**  
**REF : ICEBERG**



**Description:**

Warm trousers.  
Waterproof seams.  
Adjustable waist with elastic drawstring.  
Adjustable braces.  
Preformed and reinforced knees.  
5 pockets.

**Materials:**

Polyurethane-coated Oxford polyester fabric.  
Quilted polyester Taffeta lining.

**Sizes:** S, M, L, XL, XXL, XXXL

**Colours:** Grey



EN14058 EN342 EN343

**LADUT**  
**REF : LADUT**



**Description :**

Parka navy blue colour in Polyester/Cotton, felled seams, inside lining with Thermolite™ padding, inside vertical quilting, not visible on outside of the garment, removable hood with zip lined with polar fleece and Thermolite™ padding, inside stretch ribbing in warm and goog fabric, drawstring between 2 seams with stopper and tip, inside collar lined with polar fleece, front zip double cursor with tab closing with velcro all the length of the jacket, 1 chest pocket on left side with flap closed by velcro, "flake" embroidery white colour on the flap, 1 layered pen pocket, 1 chest pocket on right side vertical opening closed by velcro, 1 layered phone pocket, 2 bottom pockets vertical opening closed by flap with velcro, pockets are lined with Thermolite™ padding, back waisted by elastic, sleeves bottom with inside stretch ribbing cuff and tab closing with velcro.

**Materials:** Shell : 85% Polyester / 15% Cotton Lining : 100% Nylon Padding : 100% Thermolite™

**Sizes:** L - M - XL - XXL

**Colours:** Navy Blue

**CE** EN342

**AUDUT**  
**REF : AUDUT**



**Description :**

Dungarees navy blue colour in Polyester/Cotton, felled seams, inside lining with Thermolite™ padding, inside vertical quilting spacing between 12 and 15 cm, not visible on outside of the garment, front zip double cursor with tab closing with velcro all the length of the jacket, 2 horizontal front pockets above the waist closed by zip with "Panoply" zipper pulls, "flake" embroidery white colour on the left zipper pocket, 2 bottom pockets vertical opening closed by flap with velcro, pockets are lined with Thermolite™ padding, back waisted by elastic, sleeves bottom with inside stretch ribbing cuff and tab closing with velcro, bottom legs with inside zip and flap with velcro on all the length and adjustable with velcro.

**Materials:** Shell : 85% Polyester / 15% Cotton Lining : 100% Nylon Padding : 100% Thermolite™

**Sizes:** L/GT - M/TM - XL/XG - XXL/XX

**Colours:** Navy Blue

**CE** EN342

**LARVIK**  
**REF : LARVIK**



**Description:**

Parka. Waterproof seams. Removable wadded hood. Fastening with zip under velcro storm flap. Adjustable bottom of garment with elastic drawstring. 10 pockets.

**Materials:**

Shell : Oxford polyester with PU coating.  
Up lining : wadded polyester polar fleece.  
Low lining : quilted Taffeta polyester.

**Sizes:** S, M, L, XL, XXL, XXXL

**Colours:** Red

**CE** EN14058 EN342 EN343

**M6COM**  
**REF : M6COM**



**Description:**

PANOSTYLE® working overall 65% polyester / 35% cotton. Zip fastening under bias. Elasticated waist. Elasticated wrist. 7 pockets.

**Materials:**

65% polyester / 35% cotton 235 g/m<sup>2</sup>

**Sizes:** XS, S, M, L, XL, XXL, XXXL

**Colours:** Brown/Green, Grey / Green, Navy Blue / Orange-coloured



**M6GIL**  
**REF : M6GIL**



**Description:**

PANOSTYLE® multipockets working vest 65% polyester / 35% cotton. Bias finishing. 6 pockets.

**Materials:**

65% polyester / 35% cotton 235 g/m<sup>2</sup>

**Sizes:** XS, S, M, L, XL, XXL, XXXL

**Colours:** Brown/Green, Grey / Green, Navy Blue / Orange-coloured



**M2CDZ**  
**REF : M2CDZ**



**Description:**

MACH2 overall 65% polyester / 35% cotton. Officer collar. Front fastener by double zip. Waist tightened by elastic with stop drawcord. Bottom of the sleeves adjustable by press-stud. Elasticated waist. 11 pockets. Badge holder.

**Materials:**

65% polyester 35% cotton 245 grs/m<sup>2</sup>.

**Sizes:** S, M, L, XL, XXL, XXXL

**Colours:** Grey / Orange-coloured, Navy Blue / Royal Blue



**ALASKA**  
**REF : ALASKA**



**Description:**

PVC-coated polyester parka. Inside quilted lining with 3M Thinsulate™ padding removable by zip. Fixed hood which can be folded in the collar fastened with velcro strip. Front zip fastener under velcroed-strip double flap. 1 pocket closed by zip under front flap. 2 flapped and zipped chest pockets. 2 flapped and zipped low pockets. 1 zipped internal pocket. 1 patched pocket closed by velcro on the removable lining. Seams reinforced with thermobonded stripes. Waist and bottom tightened by elastic drawcord with stop drawcord. Elasticated cuffs with velcroed tightening strap. Polyester polar wool lined collar.

**Materials:**

Outside : polyester coated PVC.  
Removable lining : 3M Thinsulat™.

**Sizes:** S, M, L, XL, XXL, XXXL

**Colours:** Grey / Black, Red / Navy Blue, Royal Blue / Navy Blue

**CE** EN14058 EN343

**MC CHE SHIRT**  
**REF : MC CHE**



**Description:**

MACH2 CORPORATE working overshirt in polyester / cotton. Button flap fold-up long sleeves. Fastening : Zip under velcro flap. Opening for audio wires. 3 pockets.

**Materials:**

65% polyester 35% coton - 200 g/m<sup>2</sup>

**Sizes:** S, M, L, XL, XXL, XXXL

**Colours:** Beige / Grey, Light Grey / Dark Grey, Navy Blue / Black

**CE**

**M2PAW**  
**REF : M2PAW**



**Description:**

MACH2 WINTER working trousers 65% polyester / 35% cotton. Flannel lining. Elasticated waist on both sides. Concealed zip fastening. Kneepads pockets. 8 pockets.

**Materials:**

65% polyester / 35% cotton 245 g/m<sup>2</sup>  
Lining : 100% cotton flannel 145 g/m<sup>2</sup>

**Sizes:** S, M, L, XL, XXL, XXXL

**Colours:** Black / Grey, Grey / Orange-coloured

**CE**

## WINTER FLEECE JACKET REF : WINTER FLEECE JACKET



### Description:

This fleece jacket with cropped version, can be used as a lightweight, warm clothing worn alone or weather-defensive jacket to match. NANUK260 fleece is made with better warm-keeping function. In addition, it also equipped with short pull system, versatile, suitable for the year.

**Materials:** polyester

**Sizes:** S-2XL

**Colours:** Blue



## SOUS VETEMENT FIRE RETARDANT REF : SSVFR



### Description:

Underwear set. Tee-shirt with long sleeves. Long underpants.

### Materials:

STRUCTURE: 50% Meta-aramid knittwear / 48% Viscose FR / 2% carbon (220 g/m<sup>2</sup>)

**Sizes:** S, M, L, XL, XXL, XXXL, XXXXL

**Colours:** Navy Blue



EN14116 EN1149-5

## CAGOULE 1 FIRE RETARDANT REF : CAFR1



### Description:

Hood with flap covering shoulders. Model with opening for the eyes and another for the head. These openings are stitched to the main piece by a 15 mm seam. It is finished with a safety seam starting on the upper part of the opening for the eyes and ending behind the neck. The thread used is of the same material as the fabric.

### Materials:

STRUCTURE: 50% Meta-aramid / 50% Viscose FR interlock knit, 220 g/m<sup>2</sup>

**Sizes:** Single

**Colours:** Navy Blue



EN14116 EN1149-5

**COWHIDE WELDER APRON**  
**REF : TASOUB**



**Description:**

COWHIDE WELDER'S APRON 90X60CM  
Welder's apron. Welder apron with bib. Adjustment buckle on the neck.  
Sewn split leather strap with plastic bucklet.

**Materials:**

Cowhide apron, Kevlar

**Sizes:** Single

**Colours:** Grey

**CE** EN116111 TYPE A1 CLASSE 2

**ANTI-ACID OVERALL**  
**REF : DT221**



**Description:**

Overall with elasticated hood. Non-woven Deltatek® 6000. Fastening with zip under flap.  
Elasticated round head, waist and ankles. Knitted wrist. Individual airtight pack.

**Materials:**

Non-woven Deltatek 6000® : 100% polypropylene SMMS (Spunbond Melt blown x2  
Spunbond)

**Sizes:** L, XL

**Colours:** White

**CE** EN ISO 13982-1 EN13034 EN1073-2 EN1149-5

**COWHIDE WELDER'S JACKET**  
**REF : VESTE W**



**Description:**

Cowhide welder's jacket. Made-up long sleeves. Velcroed fastening under flap. Straight  
cuffs. Mandarin collar.

**Materials:**

Cowhide

**Sizes:** M, L, XL, XXL,

**Colours:** White, Grey

**CE** EN116111 TYPE A1 CLASSE 2



**COWHIDE WELDER'S CUFF PAIR**  
**REF:MANCHAB**



**Description:**

Cowhide cuff pair with elastic lateral fastening.

**Materials:**

Cowhide

**Colours:** White,Grey

**CE** EN116111 TYPE A1 CLASSE 2

**SUMMER MEDICAL VEST**  
**REF:SUMEDICALVEST**



**Description:**

Summer Medical vest

**Materials:** Cotton

**Colours:** White

**GAS-TIGHT & ANTI-ACID SCAPHANDRE**  
**REF:ALAIN**



**Description:**

Gas-tight & anti-acid suit for internal breathing apparatus, made of flame retardant  
For self-contained breathing apparatus carried inside the suit

**Materials:**

Hypalon, 550g/m2

**Colours:** Orange/Red

**CE** EN 943-1 TYPE A1

**GAS-TIGHT & ANTI-ACID SCAPHANDRE**  
**REF: ALEX**



**Description:**

Gas-tight & anti-acid suit for internal breathing apparatus, made of flame retardant  
For self-contained breathing apparatus carried inside the suit

**Materials:**

Hypalon, 550g/m2

**Colours:** Orange/Red

**CE** EN 943-1 TYPE A1

**LIQUID PROOF ANTI-ACID COMBI**  
**REF: COMBI 71**



**Description:**

Anti-acid protective overall made of flame retardant.  
Velcro flap covered standard zip closure, Elasticized cuff and leg.

**Materials:**

Hypalon, 420 g/m2

**Colours:** Orange/Red

**CE** EN 465 TYPE 4 EN 466 TYPE 3

**LIQUID PROOF ANTI-ACID FACE**  
**REF: CAGO 81**



**Description:**

Anti-acid protective hood made of flame retardant.  
Neck ring. Inside headband. Interchangeable anti-fog polycarbonate visor.

**Materials:**

Hypalon, 550 g/m2

**Colours:** Orange/Red

**CE** EN 465 TYPE 4 EN 466 TYPE 3

**ANTI ACID OVERALL**  
**REF: CO600**



**Description:**

Anti-acid overall. Assembled hood. Cuff and ankle non-elasticated. Zip fastener under press-studded flap. Sealed seams.

**Colours:** Green

**CE** EN 14605 :2005+A1 :2009

**HEAT-RESISTANT CLOTHES**  
**REF: VESTE084/PANT084**



**Description:**

Nomex Jacket and Trousers, single-sided coated with aluminized Hypalon. Roomy hood with facial flap. Zip-fastener under protective flap.

**Materials:**

Hypalon, 480 g/m2

**Colours:** Alu

**CE** EN 531 EN 466

**HEAT-RESISTANT CLOTHES HOOD**  
**REF:CAGOULE 19A**



**Description:**

Heat and projection resistant hood made of aluminized Preox papa-aramid. Assembled on adjustable headband. Side ventilation slits.

**Materials:**

Preox papa-aramid, 520 g/m2

**Colours:** Alu

**CE** EN 531

**HEAT-RESISTANT CLOTHES GUETRE**  
**REF: GUETRE19A**



**Description:**

Heat and projection resistant gaiters made of aluminized Preox papa-aramid. Open behind, with flap, one size only.

**Materials:**

Preox papa-aramid

**Colours:** Alu

**CE** EN 531

**HEAT-RESISTANT TERK**  
**REF: TERK400A**



**Description:**

Heat and projection resistant gloves made of aluminized Preox papa-aramid. American cut, wing thumb, leather hide palm.

**Materials:**

Preox papa-aramid

**Sizes:** 10, Length: 40 cm

**Colours:** Alu

**CE** EN 531

**WATER RESISTANT BAG**  
**REF:WPBAG**



**Description:**

Water Resistant ACE Bag have reinforced bottom and are made of water- and cold-resistant fabric that protects against rain, snow, marine splash, and more. Bags also feature heavy-duty, zippers, flap for moisture protection.

**Colours:** Black



**TRAVEL BAG PVC**  
**REF : TBPVC**



**Description :**

Travel Bag size 30', PVC, Water protection

**Colours:** Black



**TC008**  
**REF : TC008**



**Description :**

PVC, WATERPROOF BAG

**Sizes :** S/M/L

**Colours:** Blue



**Z1BAG**  
**REF : Z1BAG**



**Description :**  
Techline Clothes Case

**Colours:** Black



**BACKPACK**  
**REF: BACKPACK**



**Description:**  
computer bags, mesh pockets  
Main cabin: straps, mesh pockets  
Front functional pockets, key chain  
Former bags up and down, left and right side bag

**Materials:**  
plash-proof high density 1680D double strand polyester  
Lining: embossed polyester

**Weight:** 1.27KG

**Bag size:** 47.5\*35\*27cm, Computer bag size: (34-42) \*27\*4.5cm

**Colours:** Black



**UVEX CLEANING LENS  
REF :UVEXCLEAR16**



**Description:**

Protect your safety eyewear with this especially made solution to refill your Uvex® Clear® cleaning stations.

- 16 oz. bottle with pump.

CE

**UVEX LENS CLEANING STATION  
REF: UVEX3A4500**



**Description:**

500 ml Bottle cleaning solution - suitable for all lenses (3A4500)  
Plastic pump for cleaning solution

**Size:**

300 x 480 x 165mm

CE

**UVEX LENS CLEANING DISPENSER  
REF: UVEXDIPSENER**



**Description:**

Honeywell  
Uvex Lens Cleaning Solution for safety glasses

Contains: Dispenser , silicone-free cleaning tissues 700 sheets per box,  
and one bottle 9972-000 (0.5l) of lens cleaning solution ,Pump

CE

**ZEISS PRE-MOISTENED LENS CLEANING WIPES**  
**REF : ZEISSPMWIPES**



**Description:**

Zeiss Lens Cleaning Wipes safely and quickly clean most optics, including eyeglass lenses, laptop screens, camera lenses, sunglasses, cell phones and GPS screens. The pre-moistened wipes easily remove smudges, and the high tech ammonia free formula is safe for anti-reflective coating, leaving a streak free clean.  
 200 WIPES/BOX



**DELICATE TASK WIPES**  
**REF : KIMTECHWIPES**



**Description:**

KIMTECH SCIENCE\* KIMWIPES\* Delicate Task Wiper is a light duty wiper that can handle a variety of delicate tasks. Easily wipes up liquid and dust. Anti-static dispensing reduces lint and electrostatic discharge, controls usage and portability reduces waste. Nonabrasive, low-linting and low-extractable wipers for delicate task wiping. Contains LINTGUARD®, an anti-static polyshield that reduces lint and electrostatic discharge. One-ply. Convenient POP-UP® box. White. 280 WIPES/BOX

**Sizes :** 11.2 x 21.3cm



**KIMTECH SCIENCE\* KIMWIPES\* LOW DUST WIPING PAPER**  
**REF : KIMTECH SCIENCE\***



**Description:** ultra low dust, wipe the time savings;

Fine paper, not scraping perianth dry surface;  
 Anti-static film, prevents static electricity and dust;  
 Good wet and dry strength, would not be broken;  
 100% wood pulp with a special process, the texture is pure, efficient water uptake;  
 Choose a variety of specifications, to meet different needs.

**Color:** white

**Layers:** single layer

**Sizes:** 110mm \* 210mm  
 Package quantity: 280pcs

**Quantity per box:** 60 boxes

**Total quantity per box:** 16800pcs

**Applications:** science, analysis of precision instruments, wipe clean;  
 Cooperate with the product surface cleaning solvents; precision components wipe;  
 Printing equipment clean;





## LIFE JACKET F REF:LIFEJA



### Description:

Be suitable for all the aquatic activities: Sea surveillance, fishing, seas cruise, shipping, water rescue, water police, flood defense. Adjustable quick release front buckles  
Limited Floating: 120 Kg

**Materials:** Nylon, EPE foam

CE EN 393 EN 395

## LIFE JACKET INFLATABLE REF:LIFEJA2



### Description:

Inflatable life jacket. Designed and produced according to the requirements of MSC. 81(70).

When falling into water, it can be inflated by the auto inflation device with five seconds or by manually pulling the toggle so as to ensure safety of the drowning people. Light weight, comfort, easy use and suitable for offshore operation and personal protective device.

**Materials:** Nylon, auto inflation device

CE EN 396 A1

## INFLATABLE LIFEJACKET REF: CQYB/III-275N



### Description:

Inflatable lifejacket CQYB Series is developed and produced to the latest requirements of SOLAS, LSA, and MSC.81 (70) and partial product approved by CE, **CCS** and EC.; Air chamber:Double, Inflation type:automatic+manual, Buoyancy:≥275N, CO2 weight:55g; Weight:≤1.5kg, Angle in water face plane angle≥40°, trunk angle≥30°, Freeboard:≥120mm; Inflation time:≤5s, Floating duration:≥24h, Buoyancy loss after 24h≤5%  
Ambient temperature:-30-65°C

**Materials:** Inflatable Chamber Material :0.15mmTPU Film 210D Stick a Polyether + TPU(Double), Lifejacket Cover Fabric :300D Elater 23X20 Polyester Fabric

**Weight:** 1.5kg

**Sizes:** 62x30

**Colours:** red/yellow/orange/black/bule/purple/white camouflage/green camouflage

CE EN 12402-3:2006 IMO Res.MSC 81(70) as amended

**INFLATABLE LIFEJACKET**  
**REF: CQYB/II-150N**



**Description:**

Inflatable lifejacket CQYB Series is developed and produced to the latest requirements of SOLAS, LSA, and MSC.81 (70) and partial product approved by CE, CCS and EC.; Air chamber:Double, Inflation type:automatic+manual  
Buoyancy: $\geq 150N$  CO2 weight:33g Angle in water face plane angle $\geq 40^\circ$ , trunk angle $\geq 30^\circ$   
Freeboard: $\geq 120mm$   
Inflation time: $\leq 5s$   
Floating duration: $\geq 24h$   
Buoyancy loss after 24h  $\leq 5\%$   
Ambient temperature:-30-65°C

**Materials:** Inflatable Chamber Material :0.15mmTPU Film 210D Stick a Polyether + TPU(Double) Lifejacket Cover Fabric :300D Elater 23X20 Polyester Fabric

**Weight:** 1.2kg

**Sizes:** 62x30cm

**Colours:** red/yellow/orange/black/bule/purple/white camouflage/green camouflage

**CE** EN 12402-3:2006 IMO Res.MSC 81(70) as amended

**INFLATABLE LIFEJACKET**  
**REF: CQYB/ I -150N**



**Description:**

Inflatable lifejacket CQYB Series is developed and produced to the latest requirements of SOLAS, LSA, and MSC.81 (70) and partial product approved by CE, CCS and EC.; Air chamber single, Inflation type:automatic+manual, Buoyancy: $\geq 150N$   
CO2 weight:33g, Weight: $\leq 1kg$ , Angle in water face plane angle $\geq 40^\circ$ , trunk angle $\geq 30^\circ$   
Freeboard: $\geq 120mm$ , Inflation time: $\leq 5s$ , Floating duration: $\geq 24h$ , Buoyancy loss after 24h $\leq 5\%$   
Ambient temperature:-30-65°C, **Materials:** Inflatable Chamber Material :0.15mmTPU Film 210D Stick a Polyether + TPU(Double), Lifejacket Cover Fabric :300D Elater 23X20 Polyester Fabric

**Weight:** 1kg

**Sizes:** 48x33cm

**Colours:** red/yellow/orange/black/bule/purple/white camouflage/green camouflage

**CE** EN 12402-3:2006

**INFLATABLE LIFEJACKET**  
**REF: CQYB/KN-150N**



**Description:**

Inflatable lifejacket CQYB Series is developed and produced to the latest requirements of SOLAS, LSA, and MSC.81 (70) and partial product approved by CE, CCS and EC.; Air chamber:Double, Inflation type:automatic+manual, Buoyancy: $\geq 150N$   
CO2 weight:33g, Weight: $\leq 1.3kg$ ; Angle in water face plane angle $\geq 40^\circ$ , trunk angle $\geq 30^\circ$   
Freeboard: $\geq 120mm$ , Inflation time: $\leq 5s$ , Floating duration: $\geq 24h$ , Buoyancy loss after 24h $\leq 5\%$ ,  
Ambient temperature:-30-65°C

**Materials:** Inflatable Chamber Material :0.15mmTPU Film 210D Stick a Polyether + TPU(Double), Lifejacket Cover Fabric :300D Elater 23X20 Polyester Fabric

**Weight:** 1.3kg

**Sizes:** 53x30cm

**Colours:** red/yellow/orange/black/bule/purple/white camouflage/green camouflage

**CE** EN 12402-3:2006

**INFLATABLE LIFEJACKET**  
**REF: CQYB/KN-150N**



**Description:**

Inflatable lifejacket CQYB Serials is developed and produced to the latest requirements of SOLAS, LSA, and MSC.81 (70) and partial product approved by CE, CCS and EC.; Single Air chamber with foam, Inflation type:automatic+manual, Buoyancy: $\geq 150N$ (air chamber)& $75N$ (foam), CO2 weight:33g, Weight: $\leq 1.2kg$ , Angle in water face plane angle $\geq 40^\circ$  trunk angle $\geq 30^\circ$ , Freeboard: $\geq 120mm$ , Inflation time: $\leq 5s$ , Floating duration: $\geq 24h$ , Buoyancy loss after 24h $\leq 5\%$ , Ambient temperature:-30-65°C

**Materials:** Inflatable Chamber Material :0.15mmTPU Film 210D Stick a Polyether + TPU(Double), Lifejacket Cover Fabric :300D Elater 23X20 Polyester Fabric

**Weight:** 1.2kg

**Sizes:** 70x68cm

**Colours:** red/yellow/orange/black/bule/purple/white camouflage/green camouflage

**CE** EN 12402-3:2006

**INFLATABLE LIFEJACKET**  
**REF: CQYB/IV-110N**



**Description:**

Inflatable lifejacket CQYB Serials is developed and produced to the latest requirements of SOLAS, LSA, and MSC.81 (70) and partial product approved by CE, CCS and EC.; Inflation type:automatic+manual, Buoyancy: $\geq 110N$ , CO2 weight:24g Weight: $\leq 0.6kg$ , Inflation time: $\leq 5s$ , Floating duration: $\geq 24h$ , Buoyancy loss after 24h $\leq 5\%$  Ambient temperature:-30-65°C

**Materials:** Inflatable Chamber Material :0.15mmTPU Film 210D Stick a Polyether + TPU(Double) Lifejacket Cover Fabric :300D Elater 23X20 Polyester Fabric

**Weight:** 0.6kg

**Sizes:** 58x10cm

**Colours:** red/yellow/orange/black/bule/purple/white camouflage/green camouflage

**CE**

**LOGO PRINTING OR EMBROIDERY**  
**REF : LOGO**



Logo on Clothe, Helmet and Bags

Embroidery  
Printing

1 to 5 colors

Minimum Order Quantity : 20 pcs / Ref.



**ACE  
INTERNATIONAL**

**Suzhou Office (Administration)**

Baodai xi road 5188, Xukou town  
Suzhou, China, code: 215464

**Shanghai Office (Showroom)**

N.1030 Yan an Xi Road, Building 16, Room 704  
Shanghai, China, code: 200000

## COMMENTS

---